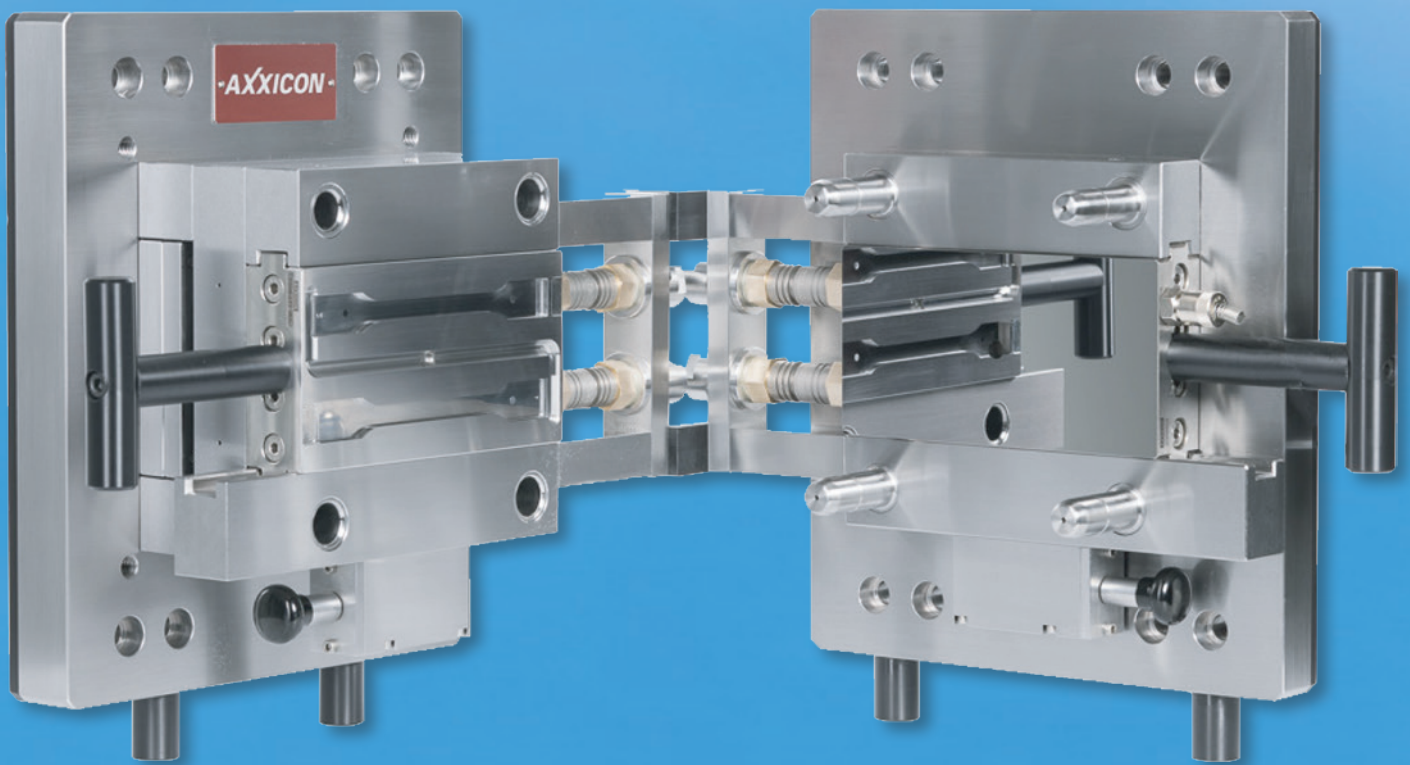




FOR THE BEST



AIM FOR THE TEST



AXXICON HAS BEEN PRODUCING HIGH-TECH INJECTION MOULDS FOR DECADES. IN 1989 WE INTRODUCED THE QUICK CHANGE AIM MOULD SYSTEM. IN 30 YEARS THIS HAS BECOME THE INDUSTRY STANDARD WITH OVER 2.500 MOULD BASES AND 12.000 INSERTS AND MIRROR PLATES DELIVERED WORLDWIDE. ALL OF THIS IS DEVELOPED AND PRODUCED IN EINDHOVEN, THE NETHERLANDS.



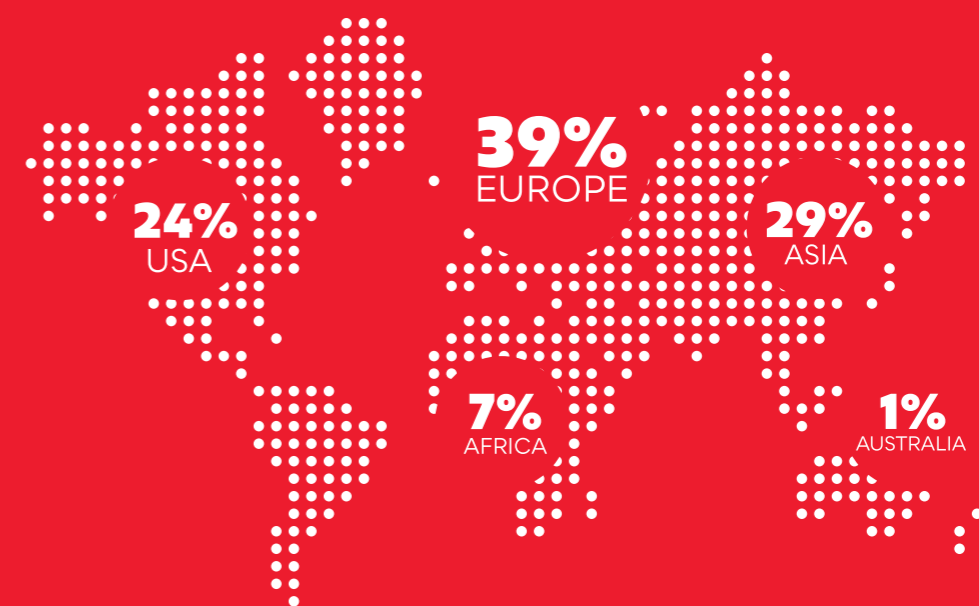
NUMBER ONE

INTERNATIONAL MATERIAL INFORMATION SYSTEM FOR THE PLASTICS INDUSTRY

Axxicon is positioned as the market leader for the production of high precision moulds and high accuracy parts. We have been able to set the standards for many years, by listening carefully to our customers. We offer an outstanding and highly personal worldwide after-sales-service through our facility in Eindhoven. Our mould systems are being developed, engineered, manufactured and validated for customers all over the world and that is why Axxicon is the preferred supplier in many industries.

WORLDWIDE

INSTALLBASE



QUICK CHANGE AIM MOULD SYSTEM BY CONTINENT

WE AIM FOR THE BEST AND DELIVER THE STANDARD FOR OVER 30 YEARS



WITH OUR AIM MOULD...

The AIM - Axxicon ISO Manufactured - Mould System is used worldwide in the polymer industry. This flexible mould system is designed to comply exactly with the internationally accepted ISO standards as used by CAMPUS®, to produce test specimens and ensure global comparison of material properties.

WE AIM FOR CONSISTENCY

Being fully compliant with all ISO requirements for approved injection moulds means we put a strong emphasis on greater standardisation and uniformity of specimen tests. Axxicon makes sure that manufacturers who are operating globally can ensure that product performance is consistent wherever it is made/tested.

The Axxicon quick change AIM Mould System is compliant with ISO 294 as used by CAMPUS®

ISO sets the exact requirements for injection moulding (moulding machine, mould design and process conditions), the designating/dimensions of test specimen, the test conditions for determining material properties and the specifications for acquiring/presenting the comparable data.

* APPROVED BY *



www.campusplastics.com



WE AIM FOR SPEED

Our multi-functional injection mould uses interchangeable inserts, and is used on conventional injection moulding machines. It incorporates a safe and reliable quick change system, which enables product forming inserts to be changed within seconds.

WE AIM FOR OPTIMAL TESTING

The Quick Change AIM mould system creates all types of test specimen that are commonly used to determine key material properties such as tensile strength, izod, charpy, impact strength, flammability, shrinkage, compression and colour matching.

SETTING THE STANDARD

THE BENEFITS OF OUR QUICK CHANGE AIM MOULD SYSTEM

GUARANTEED UP-TIME

We build on 30 years of AIM experience. Our system can be delivered with a maintenance kit for safe running, which provides our clients with the optimum up-time. Our quick change program minimizes downtime.

MODULAR CONCEPT

Modular mould concept (from XS to XXL), for all sorts of test requirements, low to high mould temperatures and suitable for all kind of (thermo)plastics, compounds and circular green/bio plastics.

COATINGS

A variety of coatings are available for all kinds of tribology purposes; e.g. scratch resistance, corrosion resistance and to improve demoulding of materials. All in cooperation with A-brand coating suppliers.

VARIETY OF MOULDS

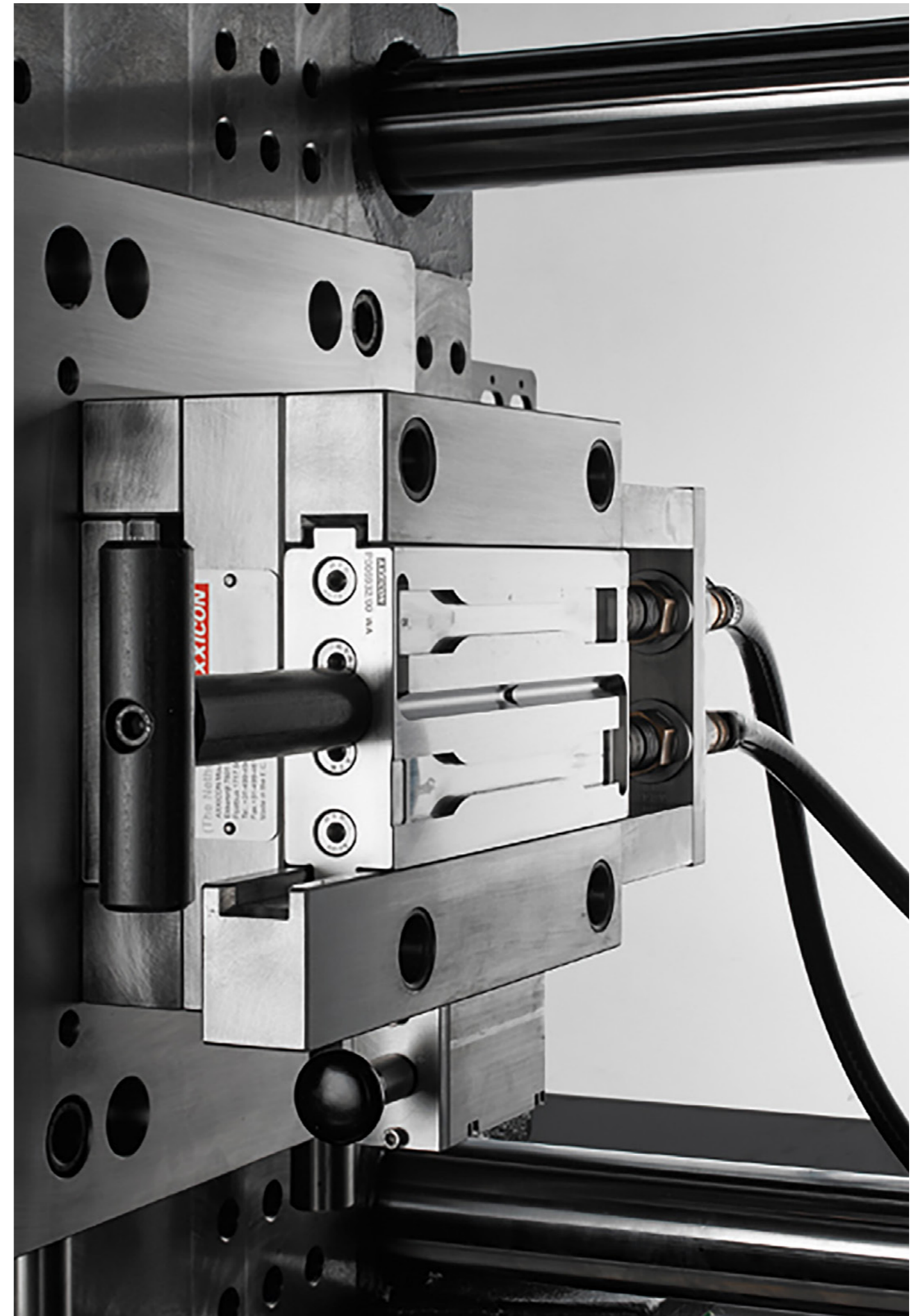
We offer a variety of mould types for all kinds of applications, designed from the same proven concept: hybrid / over moulding, electrically heated, 2 component moulding, foaming, injection/compression moulding.

ON DEMAND

The AIM system has an integrated temperature thermocouple. Cavity pressure and temperature sensors, proximity switches and shot counters can be added on demand.

TEXTURES

All kinds of textures can be applied on inserts and mirrors e.g. automotive reference standards or individual surface grains. All in cooperation with A-brand texture suppliers.





ONE STOP SHOP

PROVIDING THE BEST SERVICE
IS IN OUR DNA

SUPPORT

Axxicon has engineering, development, sales and service support. Our customer service team is available to support and serve you in all matters regarding the AIM Mould System. When direct support is needed we have service engineers who can travel around the world to support with installation, testing, validation and maintenance.

PRODUCTION

Axxicon has a highly sophisticated, clean and temperature controlled factory with accurate high speed milling machines, world class polishing machines and in house quality control. All AIM products are assembled and finished by hand in our own facility.

DISTRIBUTION

Currently Axxicon has 18 distributors, agents and representatives. We have delivered the AIM Mould System worldwide for more than 30 years.

DEDICATED TO QUALITY

COMMITTED TO YOUR REQUIREMENTS

To make sure our customers receive the right products, on time and with the desired quality, Axxicon works with flexible, skilled and experienced colleagues. We make sure that everyone is involved, communication is smooth and processes are in control.

Technical leadership, innovation and leading technology result in cutting edge moulds and products that meet the highest performance and quality requirements.

OUR VISION

Axxicon aspires to be the company which can superbly and pro-actively adjust itself to the ever-changing customer desires and market circumstances. This way proving to be the most successful in its market.





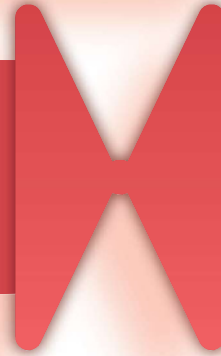
30
YEARS
OF AIM

AXXICON IN NUMBERS

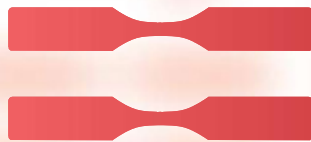
70 YEARS OF EXPERIENCE IN
TOOL MAKING AND OVER 30
YEARS WORLDWIDE DELIVERY
OF THE AIM QUICK CHANGE
MOULD SYSTEM MAKES
AXXICON YOUR RELIABLE
PARTNER.



2.500
AIM MOULD
SYSTEMS
DELIVERED



12.000
INSERTS /
MIRROR PLATES
DELIVERED



ISO

75
COUNTRIES

WORLDWIDE
INSTALL
BASE

ASTM

UL94
AND MORE



SCAN ME

XS Movie

AXXICON

Axxicon BV

Ekkersrijt 7501 - 5692HN - Son, The Netherlands

T +31 499 494450 - eindhoven@axxicon.com - www.axxicon.com



SCAN ME

AIM Movie