



EMA 502

CHNS-O Elemental Analyzer

Versatile Micro Elemental Analyzer ensuring accuracy and reliability for a wide range of applications



EMA 502 CHNS-O Analyzer

The EMA 502 Elemental Analyzer is the accurate and reliable solution for the determination of carbon, hydrogen, nitrogen, sulfur, and oxygen in various industrial sectors such as pharma and life science, organic chemistry, petrochemistry and energy, environmental, agronomy, food & feed. The EMA 502 offers consistent performance, versatility, ease-of-use and premium features for combustion analysis in accordance with international standards: AOAC, AACC, ASBC, ISO, DIN, IFFO, OIV, ASTM, EPA.

ONE SOLUTION FOR MULTIPLE ANALYTICAL CHALLENGES

- All-in-one solution for the determination of Carbon, Hydrogen, Nitrogen, Sulfur, and Oxygen in organic matrices
- Combustion and pyrolysis in a single analyzer avoiding the need for external modules

VERSATILITY AND PRODUCTIVITY

- 30-position electronic autosampler expandable with extra 3 discs to ensure maximum productivity
- Seamless switch from CHNS to O mode with the exclusive connection panel, without the need for external modules
- Helium and Argon as carrier gas

SUPERIOR RELIABILITY AND ACCURACY

- The exclusive TCD of the EMA 502 ensures maximum accuracy and reliability
- Precise determination from few ppm to 100% for solid, paste and liquid samples
- The Gas Chromatographic technology ensures the complete separation of all elements and real-time peak data

UNMATCHED EASE-OF-USE

- Intuitive operation with the powerful EMASoft™ software
- Monitor the analytical process with the real-time graph
- Benefit from a comprehensive reporting system

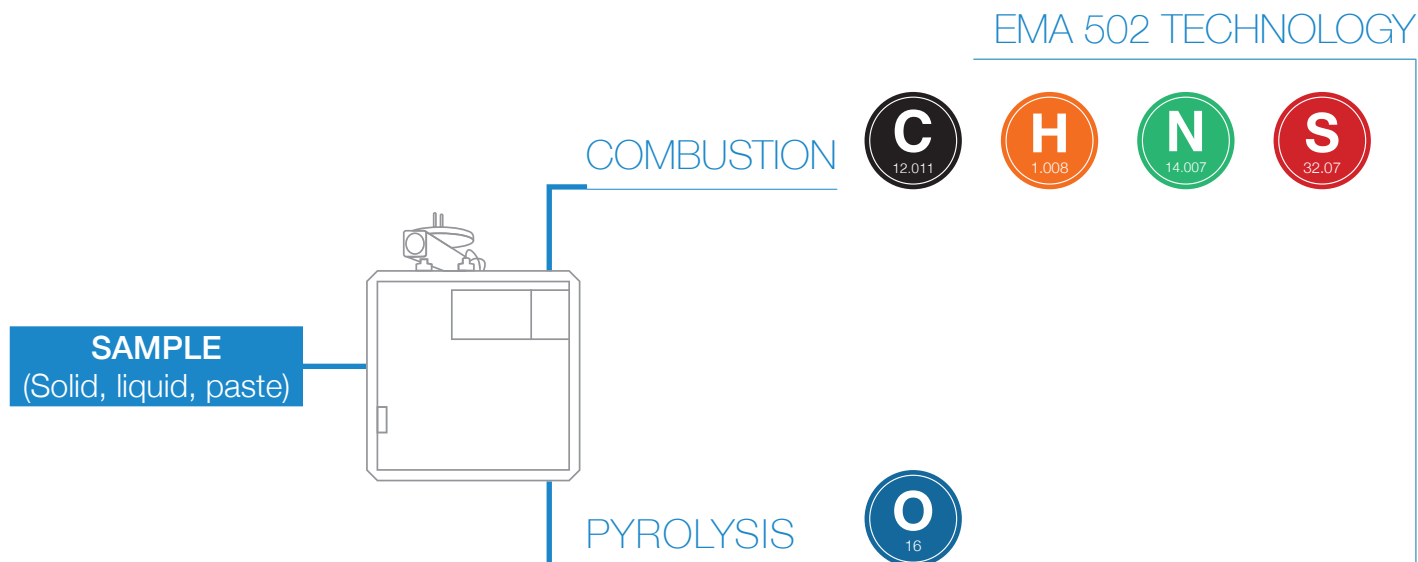
IMPROVED WORKFLOW

The exclusive connectivity to VELP Ermes Cloud Platform projects your lab to a data-rich environment with premium remote service support resulting in the highest system uptime.



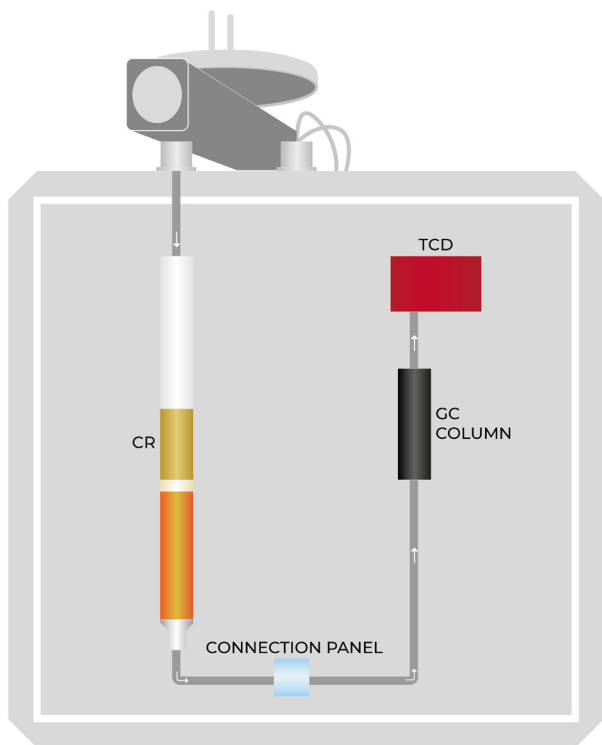
TEMS™ Technology

Save Time, Energy, Money and Space.



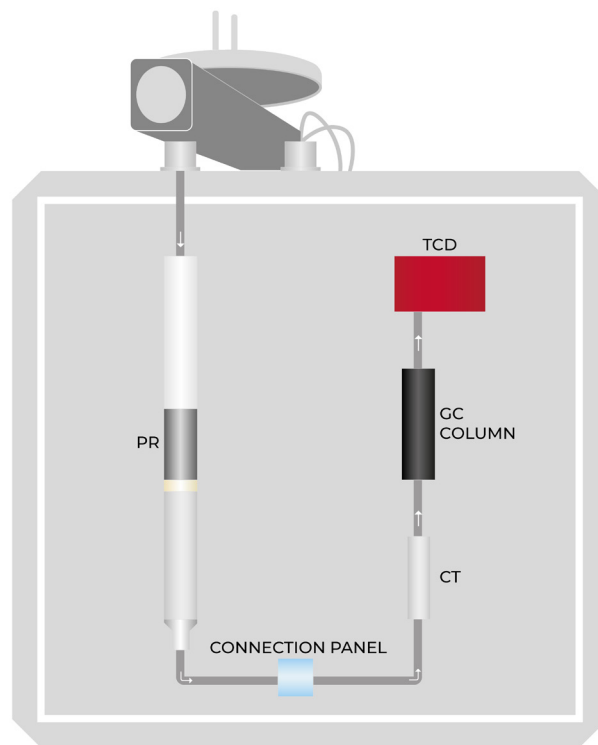
EMA 502 Analysis Process

CHNS DETERMINATION



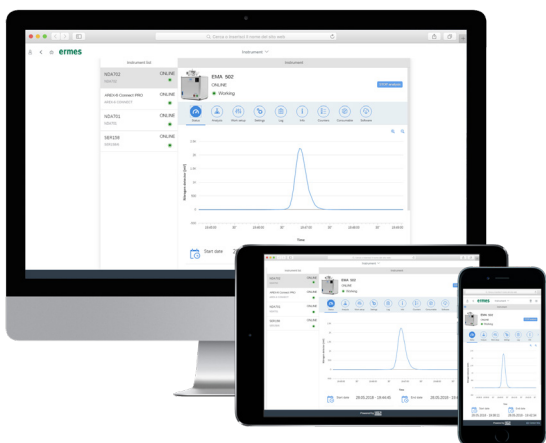
- **CR**
(Combustion Reactor) Allows complete combustion at 1030 °C in order to convert all of the sample into its elemental substances. Vcopper in the lower part of the reactor helps the reduction of NOx into N2.
- **GC COLUMN**
(Gas Chromatographic Column) Analyzes the gases and let them flow out of the column with different retention times.
- **TCD**
(Innovative TCD) Determines the content for all the elements without the need for a reference gas. Maintenance-free.

O DETERMINATION



- **PR**
(Pyrolysis Reactor) Allows complete pyrolysis at 1060 °C in order to convert all of the sample into its elemental substances.
- **CT**
(Chemical Trap with Anhydron) Absorbes all the impurities from pyrolysis and conveys the flow to the GC Column for O analysis.
- **GC COLUMN**
(Gas Chromatographic Column) Analyzes the gas flow before O quantification.
- **TCD**
(Innovative TCD) determines the content for oxygen without the need for a reference gas. Maintenance-free.

VELP ERMES CONNECTION



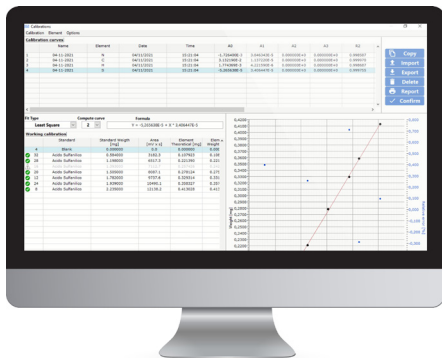
Connect the EMA 502 to the exclusive VELP Ermes Cloud Platform to improve your laboratory experience. The VELP Ermes Cloud platform connection will unburden you from tedious tasks, improving your lab productivity.

- Enhanced analytical and service support resulting in the highest system uptime
- Real time monitor and control of the instrument from PC, smartphone and tablet whenever you want, wherever you are
- Immediate alert and notification with the possibility to stop the instrument for maximum safety
- Regular software updates will guarantee the best performance and new features with just one-click

ermes enabled

EMASoft™ Software

The EMASoft™ software is the powerful VELP solution that controls and operates the EMA 502 analyzer. The EMASoft™ comes with a user-friendly interface that displays all the relevant information at a glance: results, database and instrument conditions. It is possible to choose from a library of pre-installed methods and create customized ones.

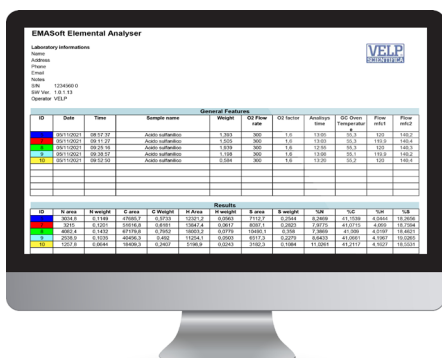


1 BEFORE THE ANALYSIS

- Create or choose a calibration curve for C, H, N, S and O
- Fill in the required data (sample name, analysis type, weight...)
- Select a method and calibration curve

2 DURING THE ANALYSIS

- Monitor of the working parameters
- Real-time graph with all the element peaks for a comprehensive understanding of the analysis as it progresses
- Immediate readout of the results in mg and %



3 AFTER THE ANALYSIS

- Multiple data comparison in graph
- Data export in .xls, .txt and .csv to PC or LIMS
- Create, print and download reports of single or multiple analysis
- When necessary, set the instrument in Stand-by mode or Sleeping mode
- Short statistical analysis in one click: result table displaying average, SD, and RSD of the analysis with direct selection on the graph

The EMA 502 Elemental Analyzer is fully compliant with FDA's Code of Federal Regulations Title 21 Part 11 that defines the requirements for using electronic records and electronic signatures on computerized systems.

- Track and record of settings and any changes to settings with the system log function running permanently, serving as an audit trail
- Track who performs any operation as analysis results are automatically signed with the user information. Each user has a unique identification and electronic signature
- Ensure the quality and incorruptibility of recorded data with backup procedures. Exported files are protected from unwanted or improper alteration
- Ensure the right delegation of responsibilities at the right level with the user management system with three access levels

21 CFR Part 11 Compliance



OPTIONAL ACCESSORIES

| | |
|--|-----------|
| Tin Foil Cups, 5x9 mm 250 pcs | A00000436 |
| Silver foil 35x35 mm, 100 pcs | A00000371 |
| Pre-packed CHNS reactor | A00000443 |
| Pre-packed O reactor | A00000444 |
| Quartz reactor tube diam. 18 mm | A00000435 |
| Quartz ash collector diam. 13 mm | A00000445 |
| Kit approx. 1000 analysis for CHNS | A00000432 |
| Kit approx. 1000 analysis for Oxygen | A00000433 |
| Quartz wool, 50 g | A00000154 |
| Nickel wool, 5 g | A00000447 |
| Nickel Carbon wool, 5 g | A00000440 |
| Anhydron, 454 g | A00000225 |
| EDTA Certified, 100 gr | A00000149 |
| Sulphanilic acid certified, 5 gr | A00000434 |
| Vcopper High Reduction Efficiency, 470 g | A00000240 |
| Tungsten oxide, 25 g | A00000439 |
| Quartz Chips, 50 g | A00000441 |
| High temperature sealing grease | A00000236 |
| Super-Absorbent Powder, 10 g | A00000317 |
| GC column for CHNS 2 m PTFE | A00000438 |
| GC column for oxygen SS 1 m | A00000437 |
| Disc 2 for autosampler | A00000199 |
| Disc 3 for autosampler | A00000200 |
| Disc 4 for autosampler | A00000201 |
| 21 CFR part 11 package for EMA 502 | A00000455 |
| IQ/OQ/PQ EMA 502 Manual | A00000442 |
| PM kit EMA502 | 40003081 |
| Fluorine Absorber, 15g | A00000456 |
| Vanadium pentoxide, 10g | A00000457 |
| VELP Ermes 1 Year Connection | E00010012 |
| VELP Ermes 3 Year Connection | E00010036 |

INSTRUMENT - CODE

EMA 502

230 V / 50-60 Hz

F30800100

SUPPLIED WITH

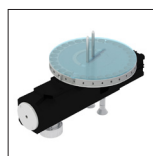
The EMA 502 Elemental Analyzer is supplied with all necessary parts to perform up to 1000* analyses CHNS (inclusive of catalysts, copper, quartz wool, reagents and seals). In addition, it contains chemicals and small consumables spare for maintenance.



A00000438
GC column
for CHNS



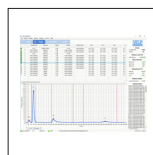
40001693
USB cable for
PC, 5m



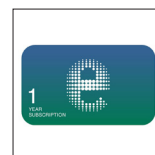
40003062
Autosampler
with disc 1



10003926
RS232 Cable
for balance



40003064
EMASoft™
Software



E00010012
VELP Ermes
1 Year
Connection

OXYGEN DETERMINATION

For Oxygen analysis, the following codes must be ordered in addition to the instrument code F30800100



A00000433
Kit approx. 1000*
analysis for Oxygen



A00000437
GC column
for oxygen

GLP Good Laboratory Practice

| | | |
|------|------|------|
| AOAC | AACC | ASBC |
| ISO | DIM | IFFO |
| OIV | ASIM | EPA |

FIELDS OF APPLICATION

The EMA 502 is extremely versatile, being suitable for carbon, hydrogen, nitrogen, sulfur and oxygen determination in several types of sample, in accordance with official AOAC, AACC, ASBC, ISO, ASTM, EPA, DIN and OIV methods.



TECHNICAL DATA

| | EMA 502 |
|------------------------------------|--|
| METHOD OF ANALYSIS | CHNS: Combustion O: Pyrolysis |
| ANALYSIS TIME | CHNS: 12 minutes O: 6 minutes |
| DETECTOR | TCD (Thermal Conductivity Detector) |
| SAMPLE WEIGHT | Up to 100mg (depending on C content) |
| AUTOSAMPLER TYPE | Electronic |
| AUTOSAMPLER CAPACITY | Up to 4 discs, 30 positions each (up to 117 samples) |
| DETECTION RANGE | C: ppm up to 20 mg abs. (or 100 %) H: ppm up to 5 mg abs. (or 100 %) N: ppm up to 20 mg abs. (or 100 %) S: ppm up to 6 mg abs. (or 100 %) O: ppm up to 6 mg abs. (or 100 %) |
| PRECISION | ≤ 0.2 % |
| COMBUSTION / PYROLYSIS TEMPERATURE | 1100 °C 2012 °F |
| CARRIER GAS | Helium or Argon (grade 5.0) |
| COMBUSTION GAS | Oxygen (grade 5.0) |
| CONNECTIVITY | Ermes Cloud Platform via Wi-Fi or LAN connected to a PC |
| 21 CFR PART 11 COMPLIANCE | Yes, optional package available |
| INTERFACES | USB; RS232 |
| OFFICIAL REFERENCES | ISO 16948; ISO 21663; ISO 10694; ISO 15178; ISO 13878; ISO 20620; ISO 2287; ISO 29541; EN 13654; EN 13654-2, EN 15936; ASTM D 5373; ASTM D 5291; ASTM D 4239; ASTM D 5622; AOAC 993.13; AOAC 2017.08, etc. |
| DIMENSIONS (W X H X D) | 500 x 510 x 410 mm (H 680 mm with autosampler) 19.7 x 20.1 x 16.1 in (H 26.8 with autosampler) |
| WEIGHT | 45 kg 99 lb |



SERVICE & SUPPORT

VELP Scientifica products are designed by our engineers to resist years of laboratory use.

Our products are manufactured with premium materials to guarantee the best performance with maximum safety.

According to our experience, a proper and regular maintenance is necessary to ensure the highest performance of analytical instrument. VELP Service Department and VELP Official Partners are always ready to offer you maintenance and service support tailored to your needs.

GET THE SUPPORT YOU NEED CHOOSING THE OPTIONS:

- Installation
- Preventive Maintenance
- Help-desk and Remote support
- Technical Assistance
- Analytical Support
- Calibration Certification



We reserve the right to make technical alterations
We do not assume liability for errors in printing, typing or transmission

VELP Official Partner

DESIGNED AND MANUFACTURED IN ITALY



ITALY – HQ
Via Stazione 16
20865 Usmate (MB) Italy
Tel. +39 039 628811
velpitalia@velp.com

INDIA
velpindia@velp.com

USA
40, Burt Drive, Unit #1, Deer Park
NY 11729 - U.S.
Tel. +1 631 573 6002
velpusa@velp.com

LATAM
velplatam@velp.com

CHINA
Room 828, Building 1, No.778
Jinji Road, Pudong New Area,
Shanghai, China
Tel. +8621 34500630
velpchina@velp.com