



# HT3100A

## Liquid GC autosampler

Offering reliability, superior performance and straight forward automation for all GC applications.



Analysing fewer samples? Get precision and performance with a system that is perfectly sized for your needs. The **HT3100A** offers **automation for processing up to 15 unattended samples.**

### KEY FEATURES:

- 50+ GC models supported
- 1 turret serves 2 injectors
- Extraordinary performance
- Requires low maintenance

**It can be easily installed on all the GC and GC/MS systems** available in the market, because of flexibility and modular configuration. It can be configured to **serve up to two injectors** in most supported GCs.

The self-aligning "plug and play" **HT3100A** mounts in seconds, without tools.

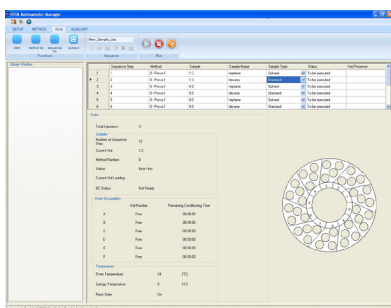
It can be **easily moved between GCs** of different brands, when workloads change.

**Easy-to-use controls for zero operator training.** A simple, easy to use keypad lets you start your analysis by just pushing the START button. All the samples in your rack will be automatically processed.

Quick sets of autosampler parameters can be done by the free PC control (**HTA Autosampler Manager**), provided together with the **HT3100A**, while all the routine operations such as analysis start, sample loading and extra wash can be managed by its dedicated keypad.

**HTA - Sampling for science**

[www.hta-it.com](http://www.hta-it.com)



**You don't need two turrets to automate the two injectors of your GC**, as the **HT3100A** can use both the front and rear injectors. The injector selection is made directly by the sequence list, avoiding difficult set up operations or re-installation to pass from one injector to the other.

Furthermore, the **rotating head design** assures that the injection port is always free, for inlet easy maintenance. The system is fully self-contained and can be interfaced with almost any gas chromatograph, regardless of the GC brand or model you have in your laboratory.

The **HT3100A is the fastest liquid autosampler** available on the market: injection is performed in less than 100ms. Fast-injection technology ensures the best possible peak shape, while maximising the accuracy of your results.

The **HT3100A** features **the greatest solvent capacity and the widest solvent selection**: it supports the use of six solvent vials of 10ml each, giving a total capacity of 60ml.

Furthermore, advantage can be taken of the **double wash step capability**: as pre- and post-wash solvent in addition to A, B... F solvents you can also choose for a combination of A+B, A+C... F+E solvents for superior analytical performance (carry-over adverse!).

The **HT3100A** also handles the **most sophisticated sampling techniques**, including the internal standard technique (also known as sandwich injection), multi-phase, ambient headspace, priority injection, nano-litre injection and much more.

Parameters are easily programmable to optimise both the most convenient sampling methods for both extremely volatile or viscous samples and the best injection technique.

**Variable needle depths** allow samples to be taken from anywhere within the vial, thus performing an extractions directly from the vial.

**HT3100A** can help to process samples more quickly and to access better data. It can also mount **different types of syringes**, with volumes from 0.5 to 100µl.

## HT3100A Technical specifications

### General features

Syringe volume: 0.5, 1, 5, 10, 25, 50 and 100µl  
Tray capacity: 15 vials, 2ml  
Maintenance: preventive counters available  
Electrical control: LAN and TTL; optional: RS232  
Syringe area illumination: no

### Filling

Sample volume: as low as step of 0.1µl  
Air volume: as low as step of 0.1µl  
Filling speed: 1-100µl/sec  
Viscosity delay: 0-15s  
Bubble elimination: up to 15 pull up strokes

### Injection

Injection speed: 1-100µl/sec  
Injection depth: programmable  
Pre and post inj delay: 0-99s

### Washing

Type: pre-injection, sample, post-injection  
Solvent capacity: 6x10ml vials  
Mode: single or double wash

### Internal standard technique

IS volume: as low as step of 0.1µl  
Air gap volume: as low as step of 0.1µl  
Mode: 1 or 2 air gaps

### Physical features

Dimensions (WxHxD): 280x570x320mm  
Weight: 6.4kg  
Power supply: 100-240±10%Vac; 50-60Hz; 60VA

**Free software provided for PC control.**

**Required PC for setup, service, method and sequence editing.**

**HTA,**  
the  
company

HTA is one of the leading Italian scientific instrument engineering and manufacturing companies. We are currently focused on applications and solutions for analytical, life sciences and clinical chemistry automation. Our specialisation is in robotic systems for sample management; among our most popular products are the GC and HPLC autosamplers and preparative workstations. In addition, HTA offers engineering and manufacturing consultancy services for its OEM customers. HTA's quality management system is certified UNI EN ISO 9001:2008.



**Distributed by:**

**HTA s.r.l.**

via del Mella, 77-79 - 25131 Brescia - ITALY

T: +39 030 3582920 - F: +39 030 3582930

**info@hta-it.com - http://www.hta-it.com**