



sales@ats-scientific.com

1-800-661-6700

Cannabis Science



Supplies
Chemicals
Safety
Equipment

Connect With Us:





Supporting the Cannabis Community

Thomas Scientific is a fourth generation, 3rd largest, fastest growing scientific supplier that is excited to support the Cannabis community. Our combined warehouse has approximately 50 million dollars of in stock inventory, currently shipping to all 50 states and internationally. Our broad portfolio of instruments, equipment, safety, consumables, supplies and chemicals is possible through our access to 1,500 different suppliers (and growing daily). We pride ourselves on being able to offer our customers the full portfolio of items they need while offering the value of extended product support and industry knowledge."

We carry all of your most trusted manufacturers
to support your research, including:



Agilent



Offering volume discounts, rebates on shipping and spend,
new lab start up specials and more.



As of July 28th, 2021, Thomas Scientific successfully affirmed conformance to ISO 9001:2015 standards at all seven U.S. facilities. The ISO Certification is focused on an organization's Quality Management Systems (QMS), which is a collection of formalized processes, procedures, assets, and values that guide the organization towards consistently high customer satisfaction. Thomas Scientific's Certificate of Registration validates its QMS under the scope of provider of cleanroom, ESD, Lab and Safety supplies, and Chemicals to the controlled environment community and ancillary industries. The ISO Certification will now provide current and future customers with an added level of transparency into their business dealings with Thomas Scientific.



United Scientific Supplies

Polypropylene Laboratory Tray

Multipurpose Polypropylene molded trays can be used for sterilizing, drying glassware, porcelain ware, and other laboratory supplies. These steam autoclavable trays have tapered walls designed for nesting.



Thomas No.	Description	Pack
1208Y67	Polypropylene Laboratory Tray, 18" x 14" x 3"	10
1208Y68	Polypropylene Laboratory Tray, 15" x 12" x 3"	10
1208Y69	Polypropylene Carrier Tray, 15" x 9.5" x 4.5"	6
1208Y70	Polypropylene Laboratory Tray, 15" x 14" x 5"	6
1208Y71	Polypropylene Laboratory Tray, Flat	10
1208Y72	Polypropylene Draining Tray, 16" x 16" x 4"	6

Intermetro

Metro WavDri Drying Tray

WavDri is a cannabis drying tray designed to maximize efficiency with better airflow and a thorough rotation process. Features such as a lightweight material, rotation indicator and Microban antimicrobial product protection make this polymer drying tray ideal for agribusiness processing.



Thomas No.	Description	Each
21A00G789	Metro WavDri Drying Tray	1
21A00G790	Metro WavDri Drying Tray, Indicator Flag	1

labForce®

PH200 Portable Meter Kit for Soil

The labForce TS-S200 Portable pH Meter is designed for professional direct soil pH measurements. The 3-in-1 POM pH/Temp. Electrode uses Polymer electrolyte, Long-Life reference system, & a unique blue spear sensor tip, making precise direct soil pH measurement easier than ever.



Thomas No.	Description	Each
1147H84	Portable pH Meter for Soil Test Includes PH200 Meter, Spear pH/Temp. Electrode, Buffers, USB cable, Software disk & carrying case	1

3M

Petrifilm™ Rapid Yeast and Mold Count Plate

Yeast and molds can grow in a wide range of conditions in raw materials, finished products and production environments, making them difficult to control. This plate features a new indicator technology that makes colonies easier to interpret.



Thomas No.	Description	Box	Case
1185X02	Petrifilm Rapid Yeast and Mold Count Plate (RYM)	50	—
1155Y09	Petrifilm Rapid Yeast and Mold Count Plate (RYM)	—	50

J.G. Finneran

QuEChERS Food Extraction & Dispersive SPE Kits

- QuEChERS stands for (Quick, Easy, Cheap, Effective, Rugged & Safe)
- QuEChERS make it simple to prepare your food samples for analysis
- Extraction kits contain preweighed salts, so you can add them after the Acetonitrile Extraction step
- Dispersive SPE kits are assembled in 2ml and 15ml sizes



Thomas No.	Description	Case
C860D75	QuEChER, 4g MgSO ₄ , 1g NaCl, 1g trisodium citrate dihydrate, 0.5g disodium hydrogentricrate sesquihydrate (EN-15662) in a 50ml tube	50
C860D76	QuEChER, 6g MgSO ₄ , 1.5g NaOAc (AOAC 2007.01) in a 50ml tube	50
C860D77	Dispersive SPE, 900mg MgSO ₄ , 300mg PSA, 150mg GCB in a 15ml tube	50

United Scientific Supplies

Desktop Winterization Labware Kits

Kit Contents:

- (1) Buchner Funnel, Table Type, Porcelain (1900ml / 5000ml/10000ml depending on size)
- (5) Food Grading PVC Tubing, 60" long, 1" ID x 1 1/4" ID x 1/8" Wall
- (1) Filter Paper, Medium Porosity/Flow, 18cm circle, pk/100 (FPR180)
- (2) Radiator Clamp
- (1) Neoprene Stopper, #13, 1" hole
- (1) Coupler, 3/4" ID



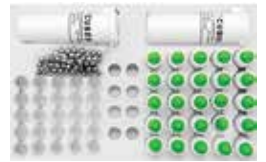
Thomas No.	Description	Each
20A00H753	Desktop Winterization Labware Kit (without Glassware)	1
20A00H754	Desktop Winterization Labware Kit, 5000ml	1
20A00H755	Desktop Winterization Labware Kit, 10000ml	1

Cubed Laboratories

CRD™ Botrytis Detection Test Kits

Items provided for the 25 tests kits:

- 25 Botrytis test strips
- 25 buffer dropper bottles
- 25 test wells
- 25 germination pads
- Carbon steel balls
- 1 bottle of test activator



Items provided for the 10 tests kits:

- 10 Botrytis test strips
- 10 buffer dropper bottles
- 10 test wells
- 10 germination pads
- Carbon steel balls

Thomas No.	Description	Each	Case
CHM02D453	CRD Botrytis Early Detection Test Kit - 25 tests	1	8
CHM02D454	CRD Botrytis Standard Test Kit - 10 tests	1	—

labForce®

PP Wide Mouth Laboratory Bottles

- Manufactured from USP Class VI resin that is FDA -21CFR compliant for food contact
- Free of heavy metals and RoHS compliant
- BPA and Phthalate free
- Precision molded for consistent wall thickness, smooth interior and exterior surfaces
- Autoclavable and approved for use from -40 to 121°C
- Leakproof closure with integrated seal ring
- Safe, break resistant alternative to glass bottles
- Manufacturing Facility is ISO 13485 and ISO 9001 Certified



Thomas No.	Description	Pack	Case
1155L59	Bottle, Wide Mouth, Round, PP with PP Closure, 125ml	12	72
1155L60	Bottle, Wide Mouth, Round, PP w/PP Closure, 250ml	12	72
1155L61	Bottle, Wide Mouth, Round, PP w/PP Closure, 500ml	12	48
1155L62	Bottle, Wide Mouth, Round, PP w/PP Closure, 1000ml	6	24
1155L64	Bottle, Wide Mouth, Round, PP w/PP Closure, 2 L	—	6
1155L65	Bottle, Wide Mouth w/Handle, Round, PP w/PP Closure, 4 L	—	6

Kimberly-Clark Professional

Kimwipe® EX-L Delicate Task Wipers

- Soft & gentle on surfaces
- Absorbent
- Low-linting



Thomas No.	Description	Box	Case
2904F24	Kimwipes Delicate Task Wipers, White, 4.4" x 8.4"	280	16,800
2904F39	Kimwipes Delicate Task Wipers, White, 11.8" x 11.8"	196	2,940
1234Z62	Kimwipes Delicate Task Wipers, White, 14.7" x 16.6"	140	2,100



United Scientific Supplies 10L Bottle/Filter Flask

With its thick glass walls and sturdy construction, this 10L bottle/flask is perfect for filtering large volumes of liquid. The thick walls and design enables this flask to withstand vacuum filtration without imploding. Graduated in 1000mL increments on a scale from 2000mL to 8000mL with an accuracy of +/- 5%. Neck size fits a #13 rubber stopper.



Thomas No.	Description	Each
1156F84	10,000mL Filter Flask, Bottle Shaped	1

BrandTech® Dispensette® S Digital Bottletop Dispensers

The new Dispensette® S builds on a half century of BRAND® bottletop dispenser experience. It features a floating piston design with even lower operating forces, a new safety discharge system, and an improved sealing system, eliminating sealing washers for even better reliability. Designed to attach directly to your reagent bottle eliminating poured transfer. In addition to the product improvements, a new 0.1-1mL size is available.



Thomas No.	Description	Each
1183C55	Dispensette S, Digital w/standard valve, 0.1-1ml	1
1183C56	Dispensette S, Digital w/standard valve, 0.2-2ml	1
1183C57	Dispensette S, Digital w/standard valve, 0.5-5ml	1
1183C58	Dispensette S, Digital w/standard valve, 1-10ml	1
1183C59	Dispensette S, Digital w/standard valve, 1-10ml	1
1183C60	Dispensette S, Digital w/standard valve, 5-50ml	1
1183C49	Dispensette S, Digital w/recirculation valve, 0.1-1ml	1
1183C50	Dispensette S, Digital w/recirculation valve, 0.2-2ml	1
1183C51	Dispensette S, Digital w/recirculation valve, 0.5-5ml	1
1183C52	Dispensette S, Digital w/recirculation valve, 1-10ml	1
1183C53	Dispensette S, Digital w/recirculation valve, 2.5-25ml	1
1183C54	Dispensette S, Digital w/recirculation valve, 5-50ml	1

Air-Tite All-Plastic Syringes

- Inert, sterile; low trace element content
- Research study proves low inherent toxicity
- Clear, easy-to-read graduations



Thomas No.	Description	Box	Case	Bag
8939N01	Syringe, Luer slip, 1ml	100	18,000	—
8939N07	Syringe, Luer slip, 3ml	100	25,000	—
8939N13	Syringe, Luer slip, 5ml	100	2,000	—
8939N19	Syringe, Luer slip, 10ml	100	1,200	—
8939N25	Syringe, Luer slip, 20ml	100	800	—
8939N31	Syringe, Luer slip, 30ml	50	500	—
8939N37	Syringe, Luer slip, 50ml	30	300	—
8939N43	Syringe Caps, Non-sterilized	—	—	1,000

United Scientific Supplies Magnetic Bar Retriever

350mm length magnetic bar retriever.

Thomas No.	Description	Each
1217D17	Magnetic Bar Retriever, 350mm	1

Globe Scientific Cylindrical Stir Bars

- Produced from PTFE
- For the stirring of liquids on magnetic stirrers and/or hotplate stirrers
- Strong alloy magnets sheathed in pure white inert PTFE
- Supplied in polarity aligned packs to ensure maximum coupling strength
- Resistant to virtually all chemical attack and temperatures up to 260°C



Thomas No.	Description	Pack
1181B85	Stir Bar, Cylindrical, PTFE, 6mm	2
1181B87	Stir Bar, Cylindrical, PTFE, 8mm	2
1181B89	Stir Bar, Cylindrical, PTFE, 12mm	2
1181B91	Stir Bar, Cylindrical, PTFE, 15mm	2
1181B93	Stir Bar, Cylindrical, PTFE, 20mm	2
1181B95	Stir Bar, Cylindrical, PTFE, 25mm	2
1181B97	Stir Bar, Cylindrical, PTFE, 30mm	2
1181B99	Stir Bar, Cylindrical, PTFE, 35mm	2
1181C01	Stir Bar, Cylindrical, PTFE, 40mm	2
1181C03	Stir Bar, Cylindrical, PTFE, 45mm	2
1181C05	Stir Bar, Cylindrical, PTFE, 50mm	2
1181C07	Stir Bar, Cylindrical, PTFE, 60mm	2
1181C09	Stir Bar, Cylindrical, PTFE, 70mm	2

SP Bel-Art Closed Lead Rings

- Stabilize glassware immersed in water baths; reduces floating, breakage and chemical spills
- Bright red Vikem® vinyl coating
- Chemical-resistant
- Will not scratch flasks
- Available in five diameter/weight combinations



Thomas No.	Description	Each
1226C34	Lead Ring, 0.36 lb, 2.0" OD x 0.74" ID, Fits 5-10ml cylinders	1
9868A35	Lead Ring, 0.5 lb, 3.0" OD x 1.7" ID, Fits 125-500ml flasks	1
9868A37	Lead Ring, 1.0 lb, 3.5" OD x 2.0" ID, Fits 250-1000ml flasks	1
9868A39	Lead Ring, 1.5 lb, 4.0" OD x 2.2" ID, Fits 500-2000ml flasks	1
9868A41	Lead Ring, 2.0 lb, 4.5" OD x 2.8" ID, Fits 1000-4000ml flasks	1

labForce® Ultra-High-Speed 15ml & 50ml Polypropylene Centrifuge Tubes

labForce Ultra-High-Speed 15ml & 50ml Centrifuge Tubes have been designed for high speed centrifugation and meet the demands of the most crucial scientific work. Produced using premium grade USP Class VI resins in an automated, touch free manufacturing process that provides both ultimate performance and cost savings to users.



Thomas No.	Description	Case
1163X42	Centrifuge Tube, High performance, 15ml, Red screw cap, Assembled, PP, Printed graduations, Sterile, 25/Bag, 20 Bags/Unit	500
1163X43	Centrifuge Tube, High performance, 15ml, Red screw cap, Assembled, PP, Printed graduations, Sterile, 25/Rack, 20 Racks/Unit	500
1163X44	Centrifuge Tube, High performance, 50ml, Red screw cap, Assembled, PP, Printed graduations, Sterile, 25/Bag, 20 Bags/Unit	500
1163X45	Centrifuge Tube, High performance, 50ml, Red screw cap, Assembled, PP, Printed graduations, Sterile, 25/Rack, 20 Racks/Unit	500



Pall Laboratory

Pall® Acrodisc® Syringe Filter

- Wide range of filter media available
- Available in 0.2 µm for UHPLC application
- Available with pre-filter for difficult to filter samples



Thomas No.	Description	Pack	Case
21A00A675	Syringe Filter with PTFE Membrane - 0.45µm, 25mm	50	200
21A00A676	Syringe Filter with PTFE Membrane - 0.2µm, 25mm	50	200
21A00A678	Syringe Filters with PVDF Membrane - 0.2µm, 25mm	50	200
21A00A679	Syringe Filters with PVDF Membrane - 0.45µm, 25mm	50	200
21A00A684	Syringe Filters with Nylon Membrane - 0.2µm, 25mm	50	200

Pall Laboratory

Pall® MicroFunnel™ Filter Funnel

- Certified. Each lot is certified for microbiological analysis to provide added assurance of reliable results.
- Easy-to-use. Unique squeeze separation of cylinder from base allows easy access to membrane.
- Individually bagged, disposable filter units prevent cross-contamination of samples
- Available in 300ml capacity to process larger samples



Thomas No.	Description	Each	Pack
20A00U095	Filter Funnel with GN-6 Membrane, 100ml, 0.45µm, White, Gridded, Sterile, Bulk Pack	—	50
20A00U098	Filter Funnel with Metrical® Black Membrane, 100ml, 0.45µm, Black, Gridded, Sterile, Individually Bagged	—	50
20A00U099	Filter Funnel with Supor® Membrane, 100ml, 0.2µm, White, Ungridded, Sterile, Individually Bagged	—	50
20A00U103	Filter Funnel with Petri Dish Lid Kit & GN-6 Membrane, 100ml, 0.45µm, White, Gridded, Sterile, Individually Bagged	—	50
20A00U107	Filter Funnel with GN-6 Membrane, 300ml, 0.45µm, White, Gridded, Sterile, Individually Bagged	—	20
20A00U112	Filter Funnel with Supor® Membrane, 300ml, 0.45µm, White, Gridded, Sterile, Individually Bagged	—	20

Globe Scientific

Low Retention Pipette Tips

- Manufactured in a cleanroom using fully automated equipment
- Certified free from Human DNA, DNase, RNase, Pyrogens and PCR Inhibitors
- Produced from medical grade virgin polypropylene (PP)
- All tips are graduated for accurate measurements
- Universal fit design provides an airtight fit on most brands of pipettor



Thomas No.	Description	Pack	Bag
1196U20	Low Retention Tip, 0.1 - 10µL, 31mm, Natural, Sterile, Racked	50	200
1196U21	Low Retention Tip, 0.1 - 10µL, 31mm, Natural, Sterile, Reloading Stack	50	200
1171U41	Certified Pipette Tips, 0.1-20µL, Low Retention, Universal, Natural, 45mm, Extended Length, Bulk	50	200
1171U42	Certified Pipette Tips, 0.1-20µL, Low Retention, Universal, Natural, 45mm, Extended Length, Sterile, 96/Rack, 10 Racks/Box	50	200
1171U43	Certified Pipette Tips, 0.1-20µL, Low Retention, Universal, Natural, 45mm, Extended Length, Sterile, Reloading Stack, 96/Tray, 10 Trays/Stack	50	200
1196U22	Low Retention Tip, 1 - 200µL, 54mm, Natural, Non-Sterile, Bulk in Bag	1,000	—
1196U23	Low Retention Tip, 1 - 200µL, 54mm, Natural, Sterile, Racked	1,000	—
1196U24	Low Retention Tip, 1 - 200µL, 54mm, Natural, Sterile, Reloading Stack	1,000	—
1196U25	Low Retention Tip, 100 - 1250µL, 84mm, Extended Length, Natural, Non-Sterile, Bulk in Bag	1,000	—
1196U26	Low Retention Tip, 100 - 1250µL, 84mm, Extended Length, Natural, Sterile, Racked	50	200
1196U27	Low Retention Tip, 100 - 1250µL, 84mm, Extended Length, Natural, Sterile, Reloading Stack	1,000	—

MP Biomedicals

SuperFastPrep-2™

- Handheld, cordless sample preparation instrument
- For Sample Preparation, lysis, homogenization and grinding or virtually any type of biological sample including the most tough and resistant



Thomas No.	Description	Each
1177P66	SuperFastPrep-2	1
1177P67	Voltage Converter for SuperFastPrep	1
1177P68	Field Case for SuperFastPrep	1

Agilent Technologies

Wide Opening Screw Top Glass Vials

Agilent provides a wide variety of vials and cap compatible with the HTC LC Injector listed in the Vials and Caps section. CTC recommends using Silicone/PTFE and PTFE/Silicone/PTFE septa for purity and penetration properties. Below are featured the most popular vials and caps used with the HTC.



Thomas No.	Description	Pack
2714N57	Screw Top Vial, 2ml, Clear, Wide Opening	100
2714N58	Vial, Clear w / Write-On Spot	100
2714N59	Vial, Amber w / Write-On Spot	100
2714N63	Screw Cap, PTFE / Silicone Septa	100

For a full list of options, visit ThomasSci.com

Cytiva

Whatman Grade 1 Qualitative Filter Papers

A widely used standard grade filter paper for routine applications with medium retention and flow rate. It covers a wide range of laboratory applications and is frequently used for clarifying liquids.



Thomas No.	Description	Pack
0898S97	Grade 1 Qualitative Filter Paper Standard Grade, circle, 25mm	100
1212E51	Grade 1 Qualitative Filter Paper Standard Grade, circle, 47mm	100
4712B20	Grade 1 Qualitative Filter Paper Standard Grade, circle, 70mm	100
4712B25	Grade 1 Qualitative Filter Paper Standard Grade, circle, 90mm	100
4712B40	Grade 1 Qualitative Filter Paper Standard Grade, circle, 150mm	100
4712B45	Grade 1 Qualitative Filter Paper Standard Grade, circle, 185mm	100
4712B50	Grade 1 Qualitative Filter Paper Standard Grade, circle, 240mm	100
4712B55	Grade 1 Qualitative Filter Paper Standard Grade, circle, 270mm	100
4712C22	Grade 1 Qualitative Filter Paper Standard Grade, sheet, 460 x 570mm	100
4712C26	Grade 1 Qualitative Filter Paper Standard Grade, sheet, 460 x 570mm	500

More sizes available, visit ThomasSci.com

NEST Scientific USA

96 Well PCR Plates

- High quality Polypropylene material to guarantee low protein absorption and/or sample loss
- White plates are ideal for qPCR
- Autoclavable
- Plate without skirt can be cut to any desired format
- Both high profile and low profile semi skirt PCR plates are available



Thomas No.	Description	Pack	Case
1194Z92	0.1mL 96 Well PCR Plate, No Skirt, Clear	25	100
1194Z93	0.2mL 96 Well PCR Plate, No Skirt, Clear	25	100
1194Z94	0.1mL 96 Well PCR Plate, No Skirt, White	25	100
1194Z95	0.2mL 96 Well PCR Plate, No Skirt, White	25	100
1194Z96	0.2mL 96 Well PCR Plate, No Skirt, Elevated wells, Clear	25	100
1194Z97	0.2mL 96 Well PCR Plate, No Skirt, Elevated wells, White	25	100



- | Sample Prep/Filtration
- | Process reactors
- | Distillation kits and systems
- | Process filter reactors
- | Beakers & Vials
- | Jars
- | Glass joints and adapters
- | Boiling flasks
- | Condenser kits
- | Chromatography – HPLC
- | IEX chromatography



Thomas No.1198V25
SYNTHWARE
Erlenmeyer Flask



Thomas No.1234D50
Common Purchase
Boiling Flask



Thomas No. 1160X05
Glass Beaker
Heavy Duty



Thomas No.1139C58
Short Path Distillation Kit

J.G. Finneran Pre-Assembled R.A.M.™ Vials with 9mm Caps

Components packaged in a tray that fits into bench drawer for easy access. Packaging keeps products visible & particle free. Pre-assembled. Packs come ready-to-use.



Thomas No.	Description	Case
1200L84	Clear 9mm Thread R.A.M.™ Vial, 12 x 32mm, 0.040" PTFE/Butyl rubber septa, Smooth black cap	100
1200L85	Amber 9mm Thread R.A.M.™ Vial, 12 x 32mm, 0.040" PTFE/Butyl rubber septa, Smooth black cap	100
1200L90	Clear 9mm Thread R.A.M.™ Vial, 12 x 32mm, 0.040" PTFE/Butyl rubber septa, Ribbed black cap	100
1200L91	Amber 9mm Thread R.A.M.™ Vial, 12 x 32mm, 0.040" PTFE/Butyl Rubber Septa, Ribbed Black Cap	100

Chemglass Life Sciences Distilling Heads

Simple distillation head with a condenser sealed to the adapter at a 75° angle. The top outer joint on the 14/20 size can be converted to a 10/18 thermometer joint by using a CG-1016-27 bushing adapter.



Thomas No.	Description	Each
1146X94	Distilling Head, 14/20 joint, 110mm condenser length	1
1146X95	Distilling Head, 24/40 joint, 250mm condenser length	1

labForce® Drying Rack

- Features channels designed for more configuration and to protect against breakage
- Drying Basket to keep small items and slotted to hold pipettes safe while drying
- SureGrip Hook with Patent-pending design to securely grips glassware into place



Use on counter or wall:

- Stands alone on integrated hinged stand
- Mounts easily on wall with included guide and hardware
- Rack made of durable polystyrene
- Can hold up to 77 lbs.
- Overall Dimensions 17.4" x 26" x 5.5" (44.1 x 66 x 13.9 cm)

Includes:

- 72 Pegs: 36 small (black), 36 large (red)
- 2 Drying baskets
- Drainage tubing
- Mounting guide & hardware
- Replacement baskets for the labForce Drying Rack Set
- 5 long and 5 short replacement pegs for the labForce Drying Rack Set
- Replacement draining set for the labForce Drying Rack Set

Thomas No.	Description	Each	Case
21A00D417	labForce Drying Rack Set, Wall/Bench Mount	1	2

**Agilent Technologies****Cannabinoid Potency Standards**

Package Type: Ampule

Package Size: 1 ml

Quantity: 1/Each

Thomas No.	Description
CHM01Q049	Cannabidiol (CBD) Standard in Methanol
CHM01Q050	Cannabinol (CBN) Standard in Methanol
CHM01Q051	Cannabigerol (CBG) Standard in Methanol
CHM01Q052	Cannabichromene (CBC) Standard in Methanol
CHM01Q053	Cannabidiolic Acid (CBDA) Standard in Acetonitrile
CHM01Q054	delta9-Tetrahydrocannabinol (delta9-THC) Standard in Methanol
CHM01Q055	delta8-Tetrahydrocannabinol (delta8-THC) Standard in Methanol
CHM01Q056	delta9-Tetrahydrocannabinolic acid (THCA) Standard in Acetonitrile
CHM01Q057	Tetrahydrocannabivarin (THCV) Standard in methanol

SPEX CertiPrep**21 Component Terpene Mix in Methanol**

SPEX CertiPrep offers ISO/IEC 17025 and ISO Guide 34 Certified Reference Materials (CRMs) for all of the common contaminants such as pesticide residues, residual solvents and heavy metals, as well as qualitative analysis CRMs, such as terpenes.

Quantity: 1/Each

Thomas No.	Description
C831D61	21 Component Terpene Mix, 100µg/ml, 1ml in Methanol
C831D62	21 Component Terpene Mix, 100µg/ml, 1ml in Methanol

See ThomasSci.com for component make-up**Simple Solvents****Ethyl Alcohol, 200 Proof, ACS-USP Grade, Undenatured**

Package Type: Poly Drum

Package Size: 55 gal.

Quantity: 1/Each

Thomas No.	Description
CHM02D894	200P Ethyl Alcohol, USP

Simple Solvents**200 Proof Completely Denatured Alcohol Formula 12A**

Package Type: Poly Drum

Package Size: 55 gal.

Quantity: 1/Each

Thomas No.	Description
CHM03Q105	200 Proof Completely Denatured Alcohol Formula 12A, CDA12A

Simple Solvents**n-Pentane, 99%**

Package Type: Poly Drum

Package Size: 55 gal.

Quantity: 1/Each

Thomas No.	Description
CHM03Q111	n-Pentane, 99% High Purity

**GoatThroat****Safety Pumps for Chemicals & Food Grade Liquids**

GoatThroat® Pumps work by pressurizing a container to dispense liquids with one touch, as easily as using a faucet. A few strokes of the piston can pressurize any container from 2-gallon jugs to 55-gallon drums.

In standard kits, one drum seal is provided with each pump, to fit and pressurize any common container size from 2-gallon jugs to 55-gallon drums.

Birch Biotech**Pristine® Acetonitrile, HPLC Grade**

Package Type: Amber Glass Bottle

Package Size: 4 L

Quantity: 4/Case

Thomas No.	Description
C788T63	HPLC Acetonitrile

Honeywell Burdick & Jackson**Methanol, LC-MS**

Package Type: Glass Bottle

Thomas No.	Description	Pkg. Size	Case
C001554	Methanol, LC-MS	2.5 L	4
C001553	Methanol, LC-MS	1 L	6
C941H10	Methanol, LC-MS	4 L	4

Birch Biotech**Pristine® Water, HPLC Grade**

Package Type: Amber Glass Bottle

Package Size: 4 L

Quantity: 1/Case

Thomas No.	Description
C788T61	Pristine Water, HPLC Grade

Reagents®**Nitric Acid 70% Trace Metal, ACS Reagent**

Package Size: 2.5 L

Quantity: 1/Each

Thomas No.	Description
C755Q95	Nitric Acid 70% Trace Metal, SC, 2.5 L, Glass

Birch Biotech**Pristine® Methanol, HPLC Grade**

Package Type: Amber Glass Bottle

Package Size: 4 L

Quantity: 4/Case

Thomas No.	Description
C788T62	Pristine Methanol, HPLC Grade

MilliporeSigma**2-Propanol, for HPLC, 99.9%**

Package Size: 4 L

Quantity: 1/Each

Thomas No.	Description
C990Q73	2-Propanol, CHROMASOLV®

– Bulk Quantity & Discounts Provided –

Other sizes are available.

Made in the USA, GoatThroat® Pumps are available in four models, to handle nearly any liquid or chemical.

Thomas No.	Description	Each
1182Q37	GoatThroat Nitrile Pump for barrels and pails	1
1182Q38	GoatThroat EPDM Pump for barrels and pails	1
1182Q39	GoatThroat Santoprene Pump for barrels and pails	1
1182Q40	GoatThroat Viton Pump for barrels and pails	1

Product Identification, Ready-made Labels or Do-It-Yourself Solutions



To identify, trace or protect products and components, Brady offers reliable labels that resist extreme temperatures, fire, oil, chemicals, solvents, abrasion and weathering. They are ideal for asset tracking, component/equipment identification, rating plates, barcoding or printed seed-to-sale identification.



WorkHorse Series

- Engineered for the harshest environments
- Survives chemicals, abrasion and temperatures
- Broad range of applications

Applications:

- Production
- Quality and research
- Labs



Defender Series

- Irreversible, visible evidence of tampering
- Protects warranty fraud, product tampering or asset theft
- Chemical, temperature and abrasion resistance

Applications:

- Packaging and bottling
- Raw material storage and warehousing



ToughWash Series

- Easy to clean
- Does not crumble
- Metal detectable version available

Applications:

- Production
- Maintenance
- Quality and research labs



ToughBond Series

- Up to six adhesion values
- For rough or oil / grease covered surfaces
- No extensive surface preparation needed

Applications:

- Maintenance
- Work flow



CleanLift Series

- Removes without scraping or surface damage
- Excellent solvent and heat resistance
- Diverse range of applications

Applications:

- Work flow
- Packaging and bottling
- Quality and research labs



VisAlert Series

- Immediate visual indication of water or heat exposure
- Continually monitor product, components or equipment
- Various ranges and designs

Applications:

- Quality and research labs



Brady offers a complete line of portable and desktop printers designed for fast and efficient label making.

Contact your Thomas Scientific Sales Representative for more information.



Thomas Inventory Management Solutions



Vendor Managed Inventory

Saving time & reducing total costs through precise, cost-efficient lab operations & supply chain solutions. Lab inventory management has never been easier.

Benefits of VMI

- Improves the customer experience by having the right products on hand
- Reduce stockouts and downtime without overstocking or carrying excess safety stock
- Increases inventory turns and reduces carrying costs of inventory
- Reduces purchasing administration costs
- Improves space utilization and reduces inventory storage space
- Increases end users and manufacturing productivity
- Increases inventory control and accuracy
- Lower overall inventory management costs
- Seamless deliveries
- Enhanced inventory visibility through our cloud mobile inventory management solution

Why Thomas Scientific?

Serving the scientific community for over 100 years, we put our customers first!

We have partnered with hundreds of customers to provide best-in-class vendor managed inventory programs with you in mind. We have a proven track record for customer inventory management freeing you up to focus on your business growth.

Let us be your Integrated Partner!

Book your FREE consultation, visit ThomasSci.com/TIMS

Laboratory Furniture



Products

- Flexible & Modular Lab Furniture Systems
- Pre-plumbed & Wired Workstations
- Chemical Fume Hoods
- Shelving Systems
- Tables/Tabling Systems
- Healthcare
- Stainless Steel Product Line
- Work Surfaces



The Complete SOLUTION

Thomas Scientific is a Direct Accounts Product & Service Provider for ICI Scientific & INSTOCK Labs. A complete source for lab furniture systems, fume hoods, painted metal casework, wood casework, stainless steel casework, work surfaces, fixtures, tables, & tabling systems.

Services

- Lab Layout & Design
- Lab Programming
- CAD Drawings
- Project Specification
- Factory Trained Installation

To view **Thomas Scientific's Flipbook** visit: ThomasSci.laboutfit.com

Cannabinoid Potency Standards and Terpenes in Cannabis



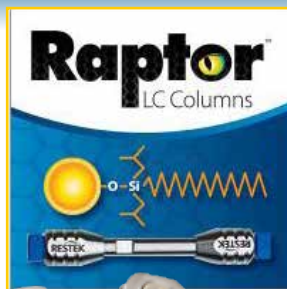
**MILLIPORE
SIGMA**



SPEX CertiPrep

Raptor™ ARC-18 LC Columns

Restek chemists became the first to combine the speed of superficially porous particles (also known as SPP or “core-shell” particles) with the resolution of highly selective USLC technology. This new breed of chromatographic column allows you to more easily achieve peak separation and faster analysis times without expensive UHPLC instrumentation.



- Ideal for high-throughput LC-MS/MS applications with minimal sample preparation
- Well-balanced retention profile for better detection and integration of large, multiclass analyte lists
- Sterically protected to endure low-pH mobile phases without sacrificing retention or peak quality
- Part of Restek's Raptor LC column line featuring 1.8, 2.7, and 5µm SPP core-shell silica

RESTEK Visit ThomasSci.com
Search 1160V48

Axcend™

Focus Nano-Flow HPLC and Column Cartridges



Bring the Lab to the Sample® with the Axcend Focus LC™, a new, portable high-performance liquid chromatograph (HPLC). The Axcend Focus LC is a shoebox-sized, nano-flow capillary solution that delivers greater sensitivity than other UV-Absorption-based HPLC systems, while using 1/500th the solvents and producing 1/500th the waste. Its size and weight allow for convenient use anywhere: from the lab bench to inside a fume hood and from in-the-field analysis to right on a production line.

Visit ThomasSci.com Search 1138W77



Aries FilterWorks

HPL-RO Reverse Osmosis System

The HPL-RO system uses feed water pressure to purify the water through a reverse osmosis membrane. The 4-stage filtration process reduces dissolved salts and organics from the water. The permeate water is conveniently stored in storage tank while the concentrated salts are sent to drain.



Thomas No.	Description	Each
1157F79	HPL-RO Reverse Osmosis System, includes membrane and pretreatment filters	1
1157F66	HPL-RO Pretreatment Cartridge Kit, includes 5.0 micron prefilter, GAC, and 1.0 micron post filter	1
1157F67	HPL-RO membrane replacement	1

Aries FilterWorks

Phoenix Ultra High-Purity Lab Water System

The Phoenix system is pre-configured into four application specific models:

- Phoenix Academy (base model): Basic Chemistry, Academic, IC, Buffers
- Phoenix Citation (with 185/254 nm UV): HPLC, GC-MS, Trace Organics
- Phoenix Biochem (with UF): Life Science, Cell Culture, Microbiology
- Phoenix Genome (with UV/UF): DNA Sequencing, PCR, Electrophoresis



Thomas No.	Description	Each
1157G00	Lab Water System, Academy (base model), 120V/60Hz	1
1157G01	Lab Water System, Biochem (with UF), 120V/60Hz	1
1157G02	Lab Water System, Citation (with UV), 120V/60Hz	1
1157G03	Lab Water System, Genome (with UV/UF), 120V/60Hz	1
1157F96	Phoenix direct feed port (installed)	1
1157F97	Phoenix recirculating dispensing gun (installed)	1
1157F99	Phoenix wall mount bracket (installed)	1
1157G04	Phoenix polishing ultrapure cartridge	1
1157G05	Phoenix polishing ultrapure low organics cartridge	1
1157G06	Phoenix dual conditioning cartridge (RO feed)	1
1157G07	Phoenix dual conditioning cartridge (SDI/TAP feed)	1
1157F95	Phoenix ultrafilter, 3/8" quick disconnect fitting	1
1157F94	0.2 micron endotoxin removal capsule filter, 1/4" MNPT x 1/4" hose barb	1
1157F77	Phoenix UV bulb, 254/185nm TOC destruct	1
1157F78	Sanitization Kit (includes cartridges, test strips, and gloves)	1

Across International

Gear-Drive 0.4-Liter Planetary Ball Mills

- High uniformity and excellent repeatability
- Fast rotational speed, high efficiency and fine granularity
- Four samples with different sizes and materials in one experiment
- Leak-proof jars for wet grinding
- Large range of materials available for grinding media
- Gear-drive offers an effective solutions to problems caused by belt driving, such as belt creep and belt abrasion
- Low center of gravity, good rigidity, compact structure, low noise, safe and reliable operation
- Adjustable height



Thomas No.	Description	Each
1157J86	4 x 100ml Gear-drive 0.4L Planetary Ball Mill, 110V	1
1157J87	4 x 100ml Gear-Drive 0.4L Planetary Ball Mill, 220V	1

Aries FilterWorks

Aries Type I High Purity Water System

The Aries high purity water system provides 4.0 liters per minute* of 18.2 megohm water. A quiet recirculation pump ensures constant water purity. Standard equipment includes a built-in pressure regulator and a 0.2 micron final filter to remove bacteria. Water quality meets or exceeds ASTM Type I water specifications.



Thomas No.	Description	Each
1157F71	Lab Water System, Countertop model, with 0.2 micron final filter	1
1157F72	Lab Water System with UV, Countertop model, with 0.2 micron final filter	1
1157F73	Lab Water System Countertop model, with 0.05 micron ultrafilter	1
1157F74	Lab Water System with UV, Countertop model, 0.05 micron final filter	1
1157F75	Replacement bulb for Aries Lab Water System	1
1157F76	Aries sanitization kit	1
1157F68	Aries Direct Feed, Secondary port (installed)	1
1157F69	Aries recirculating dispensing gun (installed)	1
1157F70	Aries wall mount bracket	1
1157F93	Aries ultrafilter replacement, 0.05 micron	1
1157F92	0.2 micron capsule filter - 1/4" MNPT x 1/4" hose barb	1
1157G32	VPK series cartridge replacement kit - RO/DI feed, for Aries systems	1

Velp

OHS Series Advance Overhead Stirrers

- Extremely resistant sealed case
- IP 54 Protection class is a guarantee of durability also when working in aggressive environment
- Full protection in case of overload, over temperature and over current
- Lock key to prevent unintentional modification of the settings
- Easy knob to navigate the menu and to activate the stirring



Thomas No.	Description	Each
1145N80	OHS 60 Advance Overhead Mixer, 115V/60Hz	1
1145N81	OHS 60 Advance Overhead Mixer, 230V/50-60Hz	1
1145N82	HS 100 Advance Overhead Mixer, 115V/60Hz	1
1145N83	OHS 100 Advance Overhead Mixer, 230V/50-60Hz	1
1145N84	OHS 200 Advance Overhead Mixer, 115V/60Hz	1
1145N85	OHS 200 Advance Overhead Mixer, 230V/50-60H	1

Benchmark Scientific

BeadBlaster™ 96 Ball Mill Homogenizer

The BeadBlaster™ 96 is an extremely versatile bead mill homogenizer that has applications in a variety of areas, including biological research, environmental testing, and industrial settings. Adapters are available for microplates, microtubes, and 50ml tubes. Grinding jars and balls in a variety of materials are available.



Thomas No.	Description	Pack	Each
21A00H426	BeadBlaster 96 Ball Mill Homogenizer, 120V US Plug	—	1
21A00H427	BeadBlaster 96 Ball Mill Homogenizer, 230V EU Plug	—	1
21A00K864	Adapter for 96 Well Plate, Pair, for BeadBlaster 96	2	
21A00K865	Tube Rack, 20 x 2ml, Pair, for BeadBlaster 96. Requires IPD9600-96	2	



Across International Ai SolventVap Rotary Evaporators

- Solvent-resistant PTFE and Viton gaskets ensuring long time operation
- Specialized motor with extremely compact, intermeshed worm and worm gear provides precise driving for very quiet, vibration-free operation
- Downward-condensing vacuum connection design ensures safe vacuum operation
- Modular design (individual rotary and water bath modules) for easy future upgrades
- Easy multi-level manual lift with secure lock for the evaporating flask
- Easy, straight-forward visual operation with digital speed and temperature display
- PID temperature controller ensures accurate temperature control is maintained



Thomas No.	Description	Each
1160W56	Ai SolventVap 0.5-Gallon/2 L Rotary Evaporator, 110V 60H	1
1160W57	Ai SolventVap 5 L Evaporator, 110V	1
1160W58	Ai SolventVap 5 L Evaporator, 220V	1
1160W59	Ai SolventVap 5 L Evaporator w/cold trap condenser & power lift, 110V	1
1160W60	Ai SolventVap 5 L Evaporator w/cold trap condenser & power lift, 220V	1
1160W61	Ai SolventVap 5.3-Gallon/10 L Rotary Evaporator w/motorized lift, 220V	1
1160W62	Ai SolventVap 5.3-Gallon/20 L Rotary Evaporator w/motorized lift, 220V	1
1160W63	Ai SolventVap 13-Gallon/50 L Rotary Evaporator motorized & manual lift, 220V	1

BrandTech® VACUUBRAND® RZ2.5 Vacuum Pump

The RZ2.5 is part of the VACUUBRAND® XS series of rotary vane vacuum pumps. These pumps have been designed from the ground up for best performance in laboratory applications. The RZ2.5 is an excellent choice for small freeze dryers, small centrifugal concentrators or other low-temperature evaporations of high boiling point solvents, molecular distillations, and other applications where diaphragm pumps cannot provide sufficient vacuum.



Thomas No.	Description	Each
1194T34	VACUUBRAND RZ2.5 Two-Stage Rotary Vane Vacuum Pump, 120V/230V, US Plug	1

Branson Bransonic® Ultrasonic Baths

- Control panel: Easily accessible panel located above and behind the tank for safety and reliability, to prevent spills on the control panel, back lit on the digital models
- Built-in drains on the 1.5 gallon units and larger, .5 and .75 gallon have a convenient built-in pour drain
- Sweep frequency
- 40KHz industrial transducers



Thomas No.	Description	Each
1207K43	M Series (Mechanical timer), Model 3800, 120 V, 1.5 gal.	1
1207K45	CPXH Series (Digital timer with heat), Model 3800, 120 V, 1.5 gal.	1

Polyscience Premium Digital General Purpose Water Baths

- Easy-to-read, color, touch screen with programmable presets and large buttons for easy navigation
- Five language settings: Chinese, English, French, German, Spanish
- Rear-mounted drain on 10 L, 20 L, and 18 L models
- High limit, Over-temperature/Low liquid alarms; Redundant safety thermostat
- Eco mode for heat-off use
- ETL (60Hz), CE (50Hz), and RoHS2 compliant



Thomas No.	Description	Each
1145H96	Premium Digital Water Bath, 2L, 120V/60Hz	1
1145H97	Premium Digital Water Bath, 2L, 240V/50Hz (European plug)	1
1145H98	Premium Digital Water Bath, 5L, 120V/60Hz	1
1145H99	Premium Digital Water Bath, 5L, 240V/50Hz	1
1145J00	Premium Digital Water Bath, 10L, 120V/60Hz	1
1145J01	Premium Digital Water Bath, 10L, 240V/50Hz	1
1145J02	Premium Digital Water Bath, 20L, 120V/60Hz	1
1145J03	Premium Digital Water Bath, 20L, 120V/60Hz	1
1145J04	Premium Digital Water Bath, 28L, 120V/60Hz	1
1145J05	Premium Digital Water Bath, 28L, 240V/50Hz	1

labForce® TS-L.N Series Standard Laboratory Balances with NTEP Certification

- Precise measurement and repeatability
- Easy-to-read information arrangement
- USB and RS-232 interface
- User-friendly draft shield



Thomas No.	Description	Each
1160U06	Analytical Balance NTEP, 220g x 0.1mg, 110-240V	1
1160U09	Precision Balance NTEP, 360g x 1mg, 110-240V	1
1160U10	Precision Balance NTEP, 1000g x 1mg, 110-240V	1
1160U12	Precision Balance NTEP, 3500g x 0.01g, 110-240V	1
1160U13	Precision Balance NTEP, 4500g x 0.01g, 110-240V	1

Adam Equipment Highland® Approved Portable Precision Balances

- Class II NTEP approved
- Balances stack efficiently and safely to save space (120mm pan size only)
- Color-coded keys facilitate quick recognition of the most frequently used buttons
- Dual tare keys operate with either the left or right hand
- Large, grade 304 stainless steel pan allows swift cleaning
- Hook included for weighing below the balance



Thomas No.	Description	Each
1155M55	Precision Balance, 100g Capacity; d=0.001g e=0.01g	1
1155M56	Precision Balance, 300g Capacity; d=0.05g e=0.05g	1
1155M57	Precision Balance, 600g Capacity; d=0.01g e=0.1g	1
1155M58	Precision Balance, 1200g Capacity; d=0.01g e=0.1g	1
1155M59	Precision Balance, 3000g Capacity; d=0.5g e=0.5g	1
1155M60	Precision Balance, 5000g Capacity; d=0.5g e=0.5g	1



Ecodyst EcoChyll X5 Hi-Speed Evaporator

Designed for budget-conscious users of evaporation lab equipment, the EcoChyll® X5 is an extremely efficient alternative to all existing evaporative technologies. Based on the same metallic condenser coil technology that elevates each instrument in the EcoChyll line, the EcoChyll® X5 features a single coil in a robust, space-friendly unit. With a 22L or 50L capacity and a small footprint, it is a premium compromise between cost and convenience. Solvent recovery throughput of up to 10L of ethanol per hour.



Thomas No.	Description	Each
21A00Q050	EcoChyll X5 Hi-Speed Evaporator 22L, Complete System, 230V	1
21A00Q051	EcoChyll X5 Hi-Speed Evaporator 50L, Complete System, 230V	1

Labconco CentriVap Cold Trap

The CentriVap Cold Trap collects evaporated liquid from a CentriVap Concentrator, protecting an accessory vacuum pump from the corrosive effects of vapors and fumes emitted from samples.



Thomas No.	Description	Each
4366N70	Centrivap Ultra-Low Cold Trap, -85° C, 115V, 60Hz	1
4366N72	Centrivap Cold Trap, 115V, 60Hz	1

Erlab Captair Smart Ductless Fume Hoods

Hoods are designed with advanced carbon filtration, Flex Technology and a simple, innovative way to keep you safe. With Erlab's unique validation process, safety is guaranteed and chemical exposure is eliminated by the configurable filtering system above the enclosure. Installation is simple and no ductwork is necessary allowing for relocation. With the push of one button, it will set you free of limitations in order to focus on what is most important: your work.



Thomas No.	Description	Each
1179U04	Fume Hood, 80-220V/50-60Hz	1
1179U05	Fume Hood, 80-220V/50-60Hz	1
1179U06	Fume Hood, 80-220V/50-60Hz	1
1179U08	Fume Hood, 80-220V/50-60Hz	1
1179U09	Fume Hood, 80-220V/50-60Hz	1
1179U10	Fume Hood, 80-220V/50-60Hz	1

Erlab Halo Smart Laboratory Air Filtration System

- Healthier air with considerable savings
- Simple to install and use - no need to connect to your HVAC
- Easy access panel for quick filter changes
- BACnet capable
- Network the units to monitor remotely
- Benefit from the exclusive Erlab warranties



Thomas No.	Description	Each
1179U43	Air Filtration System - Chemplus, 80-240V/50-60Hz	1
1179U44	Air Filtration System - VOC, 80-240V/50-60Hz	1
1179U45	VOC Filter for Volatile Organic Compounds	1
1179U46	Chemplus Filter for Solvents & Acids	1

labForce® TS-M Series Moisture Analyzers

- Designed to enable the most complex measurements
- Touchscreen for greater comfort
- Fast and precise measurement
- Diverse drying profiles
- Online process visualization
- Improves drying processes management



Thomas No.	Description	Each
1160U35	Moisture Balance, 50g x 0.1mg/0.0001%, 110V	1
1160U36	Moisture Balance, 50g x 1mg/0.001%, 110V	1
1160U37	Moisture Balance, 210g x 1mg/0.001%, 110V	1

Ohaus Guardian 7000 Hotplates Stirrers

OHAUS Guardian 7000 Hotplate Stirrers are designed with outstanding safety features and superior heating and mixing performance. The SmartHousing™ is chemical resistant with an innovative, easy-to-clean design that channels spills away from internal components and the angled glass control panel. The bright LCD display includes intuitive icons, temperature, speed and time settings - all designed to monitor performance from across the lab.



Thomas No.	Description	Each
20A00G614	Guardian 7000 HPS 7x7 Ceramic (120V)	1
20A00G616	Guardian 7000 HPS 10x10 Ceramic (120V)	1
20A00G618	Guardian 7000 HPS Round Aluminum (120V)	1

Benchmark Hermle Z446 Series High Capacity Centrifuges

- High capacity swing out rotor, 68 x 15ml or 28 x 50ml
- Ideal for tissue culture applications
- Advanced programming with automatic rotor recognition
- Available with refrigeration
- Rotor exchange is simple & requires less than 1 minute



Thomas No.	Description	Each
1189F85	Hermle Z446 Universal Centrifuge, 120V	1
1189F86	Hermle Z446 Universal Refrigerated Centrifuge, 120V	1

Hettich Instruments Roto Silenta 630 RS Floorstanding Centrifuge

- Available with internal or external cooling for GMP and clean-room environments
- Non-wind shielded rotor for best sample temperature control
- Quiet and smooth operation with up to a 120 gram imbalance
- Control panel lock with key
- Bidirectional serial interface (optional)
- Bar code reader (optional)
- Hettinfo software package (optional)
- Bidirectional serial interface (optional)



Thomas No.	Description	Each
1211Q66	Roto Silents 630 RS Floor Standing Centrifuge, 6 Places, 2000 mL, 90° Swing-out, -20°C to +40°C5 Year Warranty, 208V 3-phase	1



Labconco

Protector XL Floor-Mounted Fume Hoods

Protector XL Floor-Mounted (Walk-In) Laboratory Hoods have panel liners that may be constructed of a variety of corrosion-resistant materials and supplied in three depths to meet individual installation and application requirements. They are suitable for general chemistry applications and accommodate oversized apparatus. Widths of up to 16 feet are offered.



- By-pass airflow design
- Dry powder, glacier white epoxy-coated steel exterior
- Chemical-resistant molded composite panel liner and adjustable upper and lower baffles with flame spread less than 25 per ASTM E-84
- Removable front and side panels and exterior and interior service access panels for access to plumbing and electrical wiring
- Pre-wired instant-start T8 fluorescent lighting, light and blower switches for 115 volt, 60 Hz operation
- Tempered safety glass vertical-rising sashes framed with PVC (4', 5' and 6' models) or epoxy-coated aluminum (8' models)
- Tempered safety glass horizontal-sliding sashes with epoxy-coated aluminum frames and sash tracks (8', 10', 12', 16' models)

Thomas No.	Description	Each
1194T14	6' XL Floor-Mounted Hood w/ Vertical Sash, 43.7" Ext Depth, 115V, 2 services and 1 GFCI Electrical Duplex	1
1194T17	8' XL Floor-Mounted Hood w/ Vertical Sash, 43.7" Ext Depth, 115V, 2 services and 2 GFCI Electrical Duplexes	1
1194T23	10' XL Floor-Mounted Hood w/ Horizontal Sash, 43.7" Ext Depth, 115V, 2 services and 2 GFCI Electrical Duplexes	1

labForce®

Digital Hotplate Magnetic Stirrer

- Larger top plate (7 x 7")
- Higher temperature range (up to 400°C)
- Larger stir capacity (up to 5L)
- More powerful and reliable heating element
- Molded aluminum base/housing



Thomas No.	Description	Each
1140K86	Digital Hotplate Magnetic Stirrer, 115V	1
1140K87	Digital Hotplate Magnetic Stirrer, 230V	1
1140K88	Digital Hotplate, 115V	1
1140K89	Digital Hotplate, 230V	1
1140K90	Magnetic Stirrer, 115V	1
1140K91	Magnetic Stirrer, 230V	1

Boekel

Gravity Convection Ovens

- Temperature is regulated by a bi-metallic thermostat
- Pilot light indicates when elements are on
- Ventilating holes are provided below the heater permitting ambient air to enter at bottom; air passes through heater and exhausts from two vents at the top
- Chamber temperature is indicated by thermometer passed through thermometer holder at top of oven
- Double-walled, aluminum, enameled steel exterior and glass wool insulation; mounted on rubber feet



Thomas No.	Description	Each
7187C10	Drying Oven, 0.6 cu. ft., 115V, 660W	1
7187C17	Drying Oven, 1.6 cu. ft., 115V, 660W	1
7187C20	Drying Oven, 2.7 cu. ft., 115V, 1500W	1

Across International

AccuTemp Vacuum Drying Ovens

With our unique internal shelf heating technology, each shelf in these ovens has its own heater, in-shelf temperature sensor and temperature controller, together with great thermal-conducted aluminum and our low proportional controller technologies, the result is perfect uniformity, accurate temperature, super-fast heating rates, minimum heat loss/exterior temperature and very low power consumption.



- Easy-to-clean stainless steel interior for great durability and ease of maintenance
- Built-in check valve prevents vacuum oil backflow
- All steel construction for excellent durability

Thomas No.	Description	Each
1160W40	0.9 CF Vacuum Oven, 5 Sided Heat, SST Tubing/Valves, 110V	1
1160W42	1.9 CF Vacuum Oven, 5 Sided Heat, SST Tubing/Valves, 110V	1
1160W43	1.9 CF Vacuum Oven, 5 Sided Heat, SST Tubing/Valves, 220V	1
1160W44	3.2 CF 480°F Vacuum Oven, All SST Tubing & Valves, 110V	1
1160W45	3.2 CF 480°F Vacuum Oven, All SST Tubing & Valves, 220V	1
1160W47	7.5 CF 480°F Vacuum Oven, 220V	1
1160W48	16 CF Vacuum Oven, 110V	1
1160W49	16 CF Vacuum Oven, 220V	1

Cascade Sciences LLC

Vacuum Ovens

Model CVO-2 offers incredible temperature stability for vacuum drying and purging of pharmaceuticals, botanicals, slurries, or any temperature sensitive material. This vacuum oven liberates solvents, water, and other unwanted compounds in small batch, R&D and lab environments. NRTL certified.



Thomas No.	Description	Each
20A00G194	CVO-2 Vacuum Purge Oven - Digital Display	1
20A00G195	CVO-5 Vacuum Purge Oven - Touch Screen	1
20A00G196	CVO-10 Vacuum Purge Oven - Touch Screen with Stand	1
20A00G197	CVO-2 High Temp Vacuum Purge Oven - Watlow Controller	1

Binder

Vacuum Drying Ovens VDL Series

- Fast, gentle drying
- Optimum heat transfer through large thermal conducting plates
- Safe working thanks to ATEX-compliant safety concept
- Also option of modular complete system with vacuum pump and pump chamber



Thomas No.	Description	Each
21A00H314	Vacuum Drying Chamber for Non-Flammable Solvents, VDL023UL, 0.8 Cu. Ft., 120 V 1 ph 60 Hz	1
21A00H315	Vacuum Drying Chamber for Non-Flammable Solvents, VDL056UL, 1.9 Cu. Ft., 120 V 1 ph 60 Hz	1
21A00H316	Vacuum Drying Chamber for Non-Flammable Solvents, VDL115UL, 4.1 Cu. Ft., 120 V 1 ph 60 Hz	1



BrandTech®

Transferpette Electronic Single-Channel Pipettes with Charger

The BRAND Transferpette® electronic is an ergonomic, intuitive electronic pipette for use in most laboratory applications. It is available in five volume ranges for reliable dispensing of volumes from 0.5µl to 5ml.

The soft-touch pipetting key, adjustable finger-rest, light weight and innovative tip cone minimize static strain and operational forces, reducing the risk of repetitive stress injuries (RSI). This is the first electronic pipette to be awarded the "Ergonomics Approved" and "User-Friendly" certification from the prestigious TÜV testing service, an OSHA-accredited testing laboratory.



Thomas No.	Description	Each
1224B82	Transferpette electronic, 0.5-10ul, w/AC charger, 110V, US plug	1
7729C01	Transferpette electronic, 2-20ul, w/AC charger, 110V, US plug	1
7729C04	Transferpette electronic, 10-200ul, w/AC charger, 110V, US plug	1
7729C07	Transferpette electronic, 50-1000ul, w/AC charger, 110V, US plug	1
1224B83	Transferpette electronic, 250-5000ul, w/AC charger, 110V, US plug	1

Haier

-86°C ULT Freezers

- Microprocessor-controlled system designed for controllable range of -40°C to -86°C for cabinet space with 1°C increment
- Large LED display for cabinet temperature, set temperature, ambient temperature, and input voltage
- Settable high temperature and low temperature alarms
- Automatic clean-filter alarm and sensor error alert
- Adjustable storage shelf height
- Can be connected with network, and remote alarm systems



Thomas No.	Description	Each
1144K47	Ultralow -86C Freezer, Energy Star 338L (12 cu. ft.), 115V/60Hz	1
1144K49	-86°C Upright ULT Freezer, Energy Saving, 578L/20.4 cu. ft., 115 V, 60 hz	1
1144K51	-86°C Upright ULT Freezer, Energy Saving, 728L/25.7 cu. ft., 115V/60Hz	1
1144K52	Ultralow -86C Freezer, Energy Star 728L (26 cu. ft.) , 220V/60Hz	1
1144K53	Ultralow -86C Freezer, Energy Star 828L (29 cu. ft.), 115V/60Hz	1

Across International

Ai 6" Glass Turnkey Thin Film Distillation Gen 2 ETL, 230V, 1ph, 2-5L/hr

- High precision PTFE rollers (or blades) and inner glass surface allow a complete and uniform thin film on the heated surface, and prevent process residue
- Pre-installed cooling/heating tubing with fluid direction labels and M16 ports
- Low-placed feeding flask for ease of operation
- Driving motor with magnetic coupling sealing ensures a high vacuum level
- Constructed with high borosilicate glass 3.3, stainless steel, and Viton gaskets for ultimate corrosion resistance
- A transparent glass system allows you to see through all processes
- Auto delay safety circuit for diffusion pump cooling
- Heavy-duty stainless steel frame with swivel casters and leveling feet for mobility and stability
- Agilent diffusion pump with oil level indicator
- PolyScience immersion cooler down to -80°C (no dry ice needed)
- Installation included in the price within contiguous 48 US states



Thomas No.	Description	Each
22A00B601	Ai 6" Glass Turnkey Thin Film Distillation Gen 2 ETL, 230V, 1ph, 2-5L/hr	1

Julabo

Ultra-Low Refrigerated/Heating Circulators

JULABO Ultra-low refrigerated circulators for heating and cooling are suitable for external temperature tasks. Powerful circulating pump systems and high heating and cooling capacities guarantee short heat-up and cool-down times. ACC 'Active Cooling Control' provides active cooling control across the whole temperature range. An energy saving feature is provided by the proportional cooling capacity control in the 'FP' refrigeration units.



Thomas No.	Description	Each
1181J75	FP51-SL Ultra-Low Refrigerated/Heating Circulator, 2kW, 230V/3PPE	1
1181J77	FP89-HL Ultra-Low Refrigerated/Heating Circulator, 1kW, 230V	1
1144C98	FPW91-SL Water-cooled Ultra-Low refrigerated/heating circulator, -91...+100 °C, 3kW heater, 4.5 kW cooling @ 20 °C, 230V + 230V/3PPE	1
1144C99	FP52-SL Ultra-Low refrigerated/heating circulator, -60...+100 °C, 3kW heater, 3 kW cooling @ 20 °C, 230V/3PPE	1
1144D00	FP55-SL Ultra-Low refrigerated/heating circulator, -60...+100 °C, 3kW heater, 5.2 kW cooling @ 20 °C, 230V/3PPE	1

American BioTech Supply Premier Flammable Storage Freezers

The Standard Flammable Storage Freezers meet NFPA and OSHA guidelines 45 and 70 for the refrigerated storage of flammable (volatile) materials in general laboratory work areas. Models utilize ATEX and non-sparking components for safety. These units are NOT designed for use in environments where volatile/explosive conditions could potentially exist.

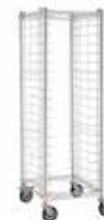


Thomas No.	Description	Each
21A00K348	Standard Flammable Storage Manual Defrost Freezer -25°C, 17 cu. ft.	1

Intermetro

Metro Stainless Steel End-Load Wire Tray Rack, 3" Slide Spacing

The Standard Flammable Storage Freezers meet NFPA and OSHA guidelines 45 and 70 for the refrigerated storage of flammable (volatile) materials in general laboratory work areas. Models utilize ATEX and non-sparking components for safety. These units are NOT designed for use in environments where volatile/explosive conditions could potentially exist.



Thomas No.	Description	Each
21A00H063	Metro Stainless Steel End-Load Wire Tray Rack, 3" Slide Spacing	1

Kinematica

POLYTRON® PT 10/35 GT Homogenizers

- Easy operation with an on-off switch and speed control
- Intelligent variable speed control for long equipment life
- Speed stability even with changes in viscosity
- Easy to adjust motor height (depending on the stand)
- Switch aggregate quickly with Click & Go coupling
- Easy aggregate clean-up with EasyClean Design



Thomas No.	Description	Each
1228W99	Polytron PT 10-35 GT Homogenizer, 100-120V	1
1228X00	Polytron PT 10-35 GT Homogenizer, 230V	1
1228X01	Polytron PT 10-35 GT, 115V Package (incl. Homogenizer, Stand, Drive Holder, Vessel Holder & Safety Positioning Ring)	1
1228X02	Polytron PT 10-35 GT, 230V Package (incl. Homogenizer, Stand, Drive Holder, Vessel Holder & Safety Positioning Ring)	1



EnviroStar Rotary Atomizing Spray Dryer, 5 liters/hr, 208 V 3 Ph 54 Amp

EnviroStar is a full-service spray dryer support company. We specialize in new spray dryer installations as well as upgrades to existing spray dryer systems. We also offer new spray dryer technologies and process support for whatever your spray dryer needs.

EnviroStar developed new spray dryer technologies to reduce the running costs of industrial spray dryers. The DryOPS system can either be adapted to existing spray dryers or can be integrated into new dryer designs. The EnviroSim offers a unique approach to improve the process of developing new formulations.



Thomas No.	Description	Each
21A00P696	Rotary Atomizing Spray Dryer, 5 liters/hr, 208 V 3 Ph 54 Amp	1

Holland Green Science Magma Cart Shooter

The Magma cart fillers feature a patented heating rod design for easier and more accurate dispensing. In as little as 3 minutes, heat up your product to a set temperature and maintain a constant temperature effectively.

- Typical filling speed 100 cartridges in under 5 minutes
- Large diameter nozzles allow fast yet accurate dispensing
- Transparent cylinder for filling level monitoring
- Adjustable temperature control
- Easy aggregate clean-up with EasyClean Design



Thomas No.	Description	Each
22A00A646	Magma 25 Cart Shooter, 25ml, 100-240V, 50/60Hz, 1ph – 40W	1
22A00A647	Magma 50 Cart Shooter, 50ml 100-240V, 50/60Hz, 1ph 40W	1

Holland Green Science Xiros 2 Lyophilizer

Our range of Xiros high performance freeze dryers are commonly used in the global pharmaceutical industry and have been sold over 5,000 times around the globe. The system is highly versatile and will be customized to your needs. Our units range from 10 kg ice condenser capacity per 24h up to 1,000 kg and beyond. All machines are available (EURO or FDA) GMP ready.



Thomas No.	Description	Each
22A00A643	Xiros 2 Lyophilizer, 480V, 60 Hz, 3ph 16 KW	1

labForce® (a Thomas Scientific Brand) HORIZON 6 Flex FA Fixed Angle Centrifuge

The HORIZON 6 Flex FA centrifuge features a fully digital display and up to 10 programmable cycles for flexible fixed angle processing in the routine lab. Easily save and select your custom time, RPM, and g-force settings, or choose from three (3) carefully formulated presets.

The LED lid lighting system indicates when the centrifuge is ready, running, or done, preventing forgotten tubes in even the noisiest labs. Process all blood and urine tubes up to 125 mm (15 mL), right out of the box. Fixed angle rotor, tube holders, and 2-year warranty (lifetime on rotor) are included. Max speed 1,850 xg/3,900 RPM. Designed, built, and supported in the USA.



Thomas No.	Description	Each
20A00K614	HORIZON 6 Flex FA Fixed Angle Centrifuge	1

Left Hand Technologies Single Column Infusion System

Most extraction methods are harmful to the environment and create a potentially hazardous workplace. Left Hand Infusion systems allow you to make a potent product that can be retailed or made into edibles and topicals immediately with no further steps needed.

- Minimum Biomass Run Size: 20 lbs
- Infusion Output (8hr shift): 10 Liters
- Control: Manual
- System Footprint: 6' x 3' x 4'
- Suggested Workspace: 10' x 10' x 8'
- Required Electrical: 120VAC/ 15A
- Required Air: 100 psi xx SCFM
- E1 Infuser can process up to 20 lbs per 8 hour shift



Thomas No.	Description	Each
22A00A329	Single Column Infusion System (Voltage: 120v, <15amps)	1
22A00A330	Single Column Infusion System (Voltage: 120v, <15amps)	1
22A00A331	1L Single Column Infusion System (Voltage: 120v, <15amps)	1
22A00A332	240ml Single Column Infusion System (Voltage: 120v, <15amps)	1

ExtractCraft LLC EtOH Pro Larger Scale Low Temperature Ethanol Extraction System, 120 V

The EtOH Pro has a large, 4L capacity and a quick 3-hour processes time, and creates top quality botanical extractions. The EtOH Pro also reclaims 98% of alcohol for re-use and cost savings. Extracts up to 1 lb.

- Closed system botanical ethanol extraction appliance
- 4L capacity (equals 1-2 pounds of dry material depending on density)
- 3 Hour processing time
- Altitude specific tuning for peak performance
- Dial controlled temperature range of 96°F-110°F
- Reclaims 98% of alcohol for re-use
- Ceramic coated kettle for easy harvesting of the oil
- Glass lid for observation process and progress
- Additional secondary purging capabilities for post processing needs



Thomas No.	Description	Each
22A00B186	EtOH Pro Larger Scale Low Temperature Ethanol Extraction System, 120 V	1

Heidolph Tuttnauer Vertical Autoclaves

Designed to autoclave everything in your lab, including liquids.

- No utility connections needed (models 2840 ELV-WR and 3870ELV-WR) just plug in and add water
- Two integrated temp. probes to ensure the liquid is completely sterilized
- Four validated cycles (glass, plastic, liquid A and liquid B-waste) and two liquid cooling cycles included with 5075ELVC
- Stores up to 200 past cycles you can open on your PC
- Create up to 16 custom cycles
- Two baskets included
- Optional biohazard filter (BH) prevents contaminated air from exhausting into the lab



Thomas No.	Description	Each
1207J49	Vertical Autoclave 5075ELVC, 230V/50-60Hz, 3-phase, cooling	1
21A00D511	Tuttnauer 2840ELV Mobile Lab Line Vertical Autoclave, 31L, 230V	1
21A00D512	Tuttnauer 3870ELV Mobile Lab Line Vertical Autoclave, 85L, 230V	1



MACH
TECHNOLOGIES

ETHANOL EXTRACTION SKIDS

EES
SERIES

A COMPLETE PROCESS from a SINGLE OPERATOR



DIRECT-CONNECT
READY'S SUPPORT FOR
YOU AND MACHINE

The EES Series offers complete process automation from ethanol chilling, extraction, recirculation, and filtration (with optional solvent recovery and decarboxylation) by a single operator interface. These turnkey systems offer the latest technology to ensure consistent and repeatable extraction process, driven by system efficiencies and automation. EES skids come in a variety of sizes to best suit your extraction needs.

Thomas No.	Mfr. No.	Capacity
22A00B532	EES-X-144	Up to 144 Lbs / Day (Based on 48 lbs per 8 hr shift)
22A00B533	EES-X-900	Up to 900 Lbs / Day (Based on 300 lbs per 8 hr shift)
22A00B534	EES-X-1800	Up to 1,800 Lbs / Day (Based on 600 lbs per 8 hr shift)
22A00B535	EES-X-3000	Up to 3,000 Lbs / Day (Based on 1,000 lbs per 8 hr shift)

Visit ThomasSci.com Search 22A00B532

ATG
Pharma



ATG Pharma has a variety of filling machines including gummy, cartridge, capsule, tincture, & lotion. They have a wide selection including fully automated and manual machines but are fully customizable depending on your application.

Please contact your Thomas sales representative for additional information.

Reusable, Silica-Free Centrifugal Partition Chromatography (CPC) Columns

GILSON



Purification of:

- Cannabinoids from cannabis oil
- Omega 3 fatty acids from fish oil
- Steviosides from stevia
- Ginsenosides from Panax ginseng
- Artemisinin from Artemisia annua (depressant)
- Vanilline from vanillia
- Xanthohumol from hops

Visit
ThomasSci.com
Search
21A00Q154

Hashatron

MADE IN THE USA 

Scalable Solventless Solutions

- Fully customizable modular platform. 50 to 400+ gallon capacity
- Engineered to support customers desired thruputs with provisions for growth in mind
- Fabricated to customers building dimensions to ensure proper fitment & ease of installation
- Designed for single operator use
- Triple wall wash vessel with power actuated lid
- Full stainless steel construction
- 18" Color Touch Screen with multi level user interface, recipe creation, & data logging & capabilities
- Wireless monitoring and building interface compatible.
- Powered lifting arm for single operator wash basket removal
- Triple wall automated pre chilling system with autofill and variable speed discharge pump
- Insulated / chilled vibratory collection vessel with full mesh stainless steel screens & closed loop recycling system



Services

- Financing & leasing options
- Onsite / virtual lab design consultation
- Rigging and field erection for large systems
- Hands on training
- Annual service and maintenance
- 24/7 support



REACTRON® laboratory systems consist of process vessels (single and multiple wall, standard and customer-specific designs), stirring systems for macro-mixing (e.g. with anchor stirrer), POLYTRON®/ MEGATRON® homogenizers and mixing systems for crushing and micro-mixing, pipework, process controls and accessories, in alignment with the customer, product and process.

Benefits

Jacketed vessel with useable capacity 2 liter made from borosilicate glass, vessel cover made from stainless steel 316L with four clamp connections (Tri-clamp 1 1/2") and sealed central lead-through fitting for stirrer tool, telescopic stand, POLY-MIX® digital overhead stirrer with maintenance free gearbox 1 : 5 (high torque) and anchor stirrer. Upgrade options and complete accessory range on request.

Visit ThomasSci.com Keyword 22A00B031



CDS Drying Systems



We offer drying systems for flower or extraction that are capable of removing anywhere from 10 lbs to 225 lbs of water per hour and is available in a variety of rack configurations.

Visit ThomasSci.com Keyword 22A00A315



Lakeland Industries

Micromax® NS Elastic Wrist & Ankle, Hood

MicroMax® NS Coverall for the protection you need from dirt, dust, grease, grime and light chemical splash. Attached hood with elastic wrists and ankle for optimal protection.



Thomas No.	Description	Case
LAKCTL428-2X	Micromax NS, 2X	25
LAKCTL428-3X	Micromax NS, 3X	25
LAKCTL428-XL	Micromax NS, XL	25
LAKCTL428-L	Micromax NS, L	25

XtraClean™

XtraGrip™ Premium Cleanroom Shoecovers

XtraGrip™ Premium shoe covers offer exceptional skid resistance and durability for both dry and wet conditions. Featuring a superior liquid resistant fabric, these seamless bottom shoe covers are low linting and resists delamination. Made of a strong, high tack polyethylene coated material.



Thomas No.	Description	Case
XC4002-S	XtraGrip XC4002 Model, Nonskid, Treated laminated SMS polypro, Seamless bottom, White, Size: Small, 14", 64gm basis weight, 1/each, 100/bag, 2 bag/case	200
XC4002-L	XtraGrip XC4002 Model, Nonskid, Treated laminated SMS polypro, Seamless bottom, White, Size: Large, 16", 64gm basis weight, 1/each, 100/bag, 2 bag/case	200
XC4002-XL	XtraGrip XC4002 Model, Nonskid, Treated laminated SMS polypro, Seamless bottom, White, Size: X-Large, 17.5", 64gm basis weight, 1/each, 100/bag, 2 bag/case	200
XC4002-2XL	XtraGrip XC4002 Model, Nonskid, Treated laminated SMS polypro, Seamless bottom, White, Size: 2X-Large, 19", 64gm basis weight, 1/each, 100/bag, 2 bag/case - (SPECIAL ORDER ITEM)	200

XtraClean™

XC6000 Protective Sleeves

- Latex-free elastic trimmed ends
- Anti-static treated
- Lightweight breathable fabric



Thomas No.	Description	Case
20A00J454	XC6618 Disposable Sleeves, Microporous, 18"	200

FyterTech Nonwovens

Poly-Drum Hazmat Spill Kits

- 20-, 30-, 55- and 95-gallon kits
- Absorb up to 16-, 24-, 40-, or 82-gallons
- Aggressive and non-aggressive spills



Thomas No.	Description	Each
1233J51	Poly-Drum Hazmat Spill Kit, 20-Gallon	1
1233J53	Poly-Drum Hazmat Spill Kit, 55-Gallon	1



Halyard Health

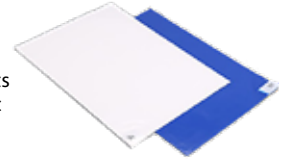
PUREZERO HG3 Tacky Nitrile Cleanroom Gloves

Ideal for cleanroom applications when handling delicate equipment in microelectronics, semiconductors, optics and non-sterile pharmaceutical and medical device manufacturing applications. These gloves are recommended for use in ISO Class 3 or higher cleanroom environments and have triple layer cleanroom compatible packaging (double poly bagged with poly case liner).

CE-Force

cleanForce Sticky Floor Mats

Multi-layered clean-film full adhesive layers form mats that effectively capture dirt and dust from foot-traffic and equipment wheels before they enter the controlled environment. Each of the numbered layers of the mat peels off easily to reveal a new clean surface.



- Peel-off sheets eliminate the need for messy cleaning & resealable to make it easy to maintain a clean surface
- Smooth, effective surface is not damaged by shoes, booties and squirt bottles or cart wheels
- Numbered corner tabs for easy tracking of remaining sheets

Thomas No.	Description	Case
1140X99	Sticky Mat, 18" x 36", Blue	4 x 30 Sheets
1140Y00	Sticky Mat, 18" x 36", Gray	4 x 30 Sheets
1140Y01	Sticky Mat, 18" x 36", White	4 x 30 Sheets
1140Y02	Sticky Mat, 18" x 45", Blue	4 x 30 Sheets
1140Y03	Sticky Mat, 18" x 45", Gray	4 x 30 Sheets
1140Y04	Sticky Mat, 18" x 45", White	4 x 30 Sheets
1140Y05	Sticky Mat, 24" x 36", Blue	4 x 30 Sheets
1140Y06	Sticky Mat, 24" x 36", Gray	4 x 30 Sheets
1140Y07	Sticky Mat, 24" x 36", White	4 x 30 Sheets
1140Y08	Sticky Mat, 26" x 45", Blue	4 x 30 Sheets
1140Y09	Sticky Mat, 26" x 45", Gray	4 x 30 Sheets
1140Y10	Sticky Mat, 26" x 45", White	4 x 30 Sheets
1140Y11	Sticky Mat, 36" x 36", Blue	4 x 30 Sheets
1140Y12	Sticky Mat, 36" x 36", Gray	4 x 30 Sheets
1140Y13	Sticky Mat, 36" x 36", White	4 x 30 Sheets
1140Y14	Sticky Mat, 36" x 45", Blue	4 x 30 Sheets
1140Y15	Sticky Mat, 36" x 45", Gray	4 x 30 Sheets
1140Y16	Sticky Mat, 36" x 45", White	4 x 30 Sheets
1140Y17	Sticky Mat, 36" x 60", Blue	4 x 30 Sheets
1140Y18	Sticky Mat, 36" x 60", Gray	4 x 30 Sheets
1140Y19	Sticky Mat, 36" x 60", White	4 x 30 Sheets

Hourglass International

HandPRO® Fortis500™ Nitrile Exam Gloves Extended Cuff

Fortis500 Extended Cuff Nitrile Exam Gloves are made from patented LOW DERMMA technology nitrile to reduce your risk of allergic contact dermatitis. The matte-black, finger-textured gloves are an optimal 10.5" length for extra splash protection. Chemotherapy drug and Fentanyl Citrate tested and thicker than a standard exam glove for added safety and protection.



Thomas No.	Description	Box	Case
1139X77	HandPRO® Fortis500™ Nitrile Exam Gloves Extended Cuff, X-Small	100	1000
1139X78	HandPRO® Fortis500™ Nitrile Exam Gloves Extended Cuff, Small	100	1000
1139X79	HandPRO® Fortis500™ Nitrile Exam Gloves Extended Cuff, Medium	100	1000
1139X80	HandPRO® Fortis500™ Nitrile Exam Gloves Extended Cuff, Large	100	1000
1139X81	HandPRO® Fortis500™ Nitrile Exam Gloves Extended Cuff, X-Large	100	1000
1139X82	HandPRO® Fortis500™ Nitrile Exam Gloves Extended Cuff, XX-Large	90	900

Thomas No.	Description	Case
20A00U907	PUREZERO HG3 light blue nitrile gloves, Tacky, XS	1500
20A00U908	PUREZERO HG3 light blue nitrile gloves, Tacky, S	1500
20A00U909	PUREZERO HG3 light blue nitrile gloves, Tacky, M	1500
20A00U910	PUREZERO HG3 light blue nitrile gloves, Tacky, L	1500
20A00U911	PUREZERO HG3 light blue nitrile gloves, Tacky, XL	1500



**XtraClean™
3-Pocket Lab Coats SMS
w/Knitted Cuffs & Collar**

XtraClean XC8614 Cleanroom Lab Coats are made from heavy-weight SMS (spunbond meltblow spunbond) non-woven fabric. These breathable lab coats provide good air permeability, protecting against light fluid contact & particles. Low-lint SMS is a clean barrier fabric, ideal to maintain integrity of the cleanroom. The XC8614 Lab Coats feature 5 snaps, knitted collar & cuffs and includes 3 pockets. Available in Blue & White.



Thomas No.	Description	Case
20A00K920	XtraClean XC8614 Cleanroom Lab Coat, Blue, SM	30
20A00K921	XtraClean XC8614 Cleanroom Lab Coat, Blue, MD	30
20A00K922	XtraClean XC8614 Cleanroom Lab Coat, Blue, L	30
20A00K923	XtraClean XC8614 Cleanroom Lab Coat, Blue, XL	30
20A00K924	XXtraClean XC8614 Cleanroom Lab Coat, Blue 2XL	30
20A00K925	XtraClean XC8614 Cleanroom Lab Coat, Blue, 3XL	30
20A00K926	XtraClean XC8614 Cleanroom Lab Coat, White, SM	30
20A00K927	XtraClean XC8614 Cleanroom Lab Coat, White, MD	30
20A00K928	XtraClean XC8614 Cleanroom Lab Coat, White, L	30
20A00K929	XtraClean XC8614 Cleanroom Lab Coat, White, XL	30
20A00K930	XtraClean XC8614 Cleanroom Lab Coat, White, 2XL	30
20A00K931	XtraClean XC8614 Cleanroom Lab Coat, White, 3XL	30

**Thomas®
Full or Half Face Shields**

Provides maximum eye and face protection. A foam strip along the top edge of shield forms an impenetrable barrier against drips and aerosols from above. Soft strap fastening system provides comfort without compromising user safety. Economical enough to justify single use. Dimensions: Short shield: 5" H x 13" W; Full shield: 7.5" H x 13" W



Thomas No.	Description	Pack	Carton
5775H50	Face Shield, Full	24	144
5775H54	Face Shield, Short	24	144

**XtraClean™
Cleanroom Polypropylene Beard Covers**

Beardcovers are made from 14gm hydro-entangled polypropylene fabric & have a latex-free elastic band. Packaged in a Class 100 cleanroom environment, beardcovers are sealed in outer polyethylene bags as well as a separate inner-case, poly-bag liner. Size is Universal and the color is white.



Thomas No.	Description	Pack	Case
XC2000-W1	Beardcover, Cleanroom spunbond lightweight polypropylene with latex free elastic band, Used to cover facial hair, White, 100/Pack, 10 Pack/Case, 1000 Each/Case	100	1000
XC2000-W5	Beardcover, Cleanroom spunbond lightweight polypropylene with non-latex elastic band, Used to cover facial hair, White, 100/Pack, 5 Pack/Case, 500 Each/Case	100	500



**XtraClean™
Cleanroom Bouffant Caps**

Made of 100% virgin polypropylene fabric with a latex-free elastic band. Weighs approximately 10 grams and packaged in a Class 100 compatible environment. Packed in sealed polyethylene bags and a separate inner-case poly-bag liner. Measures 21" in diameter. Available in Blue or White.

**National Marker (NMC)
Hazard Identification
System Kits**

Graphically explain the hazards of the chemical of your choice using the NFPA coding system. 35.56cm x 25.4cm (14" x 10") Rigid Plastic with rounder corners and predrilled mounting holes.



Thomas No.	Description	Each
1215H45	Hazard Identification System Kit	1
1215H49	Hazardous Materials Classification Sign, 14" x 10", PS Vinyl	1

**safeForce
Glass Disposal Boxes**

- Sturdy corrugated cardboard
 - 2 mil thick polypropylene liner
 - Two models: bench and floor
- Benchtop (8" x 8" x 10") & Floor (12" x 12" x 27") which hold 5.5 and 40 lbs. respectively.



Thomas No.	Description	Pack
20A00T530	Glass Disposal Box, Floor Model	6
20A00T531	Glass Disposal Box, Bench Model	6

**SAS Safety
Safety Goggles**

- ANSI Z87.1-1989 certified
 - Economical
 - Adjustable for comfort
- Perfect for any facility. These chemical splash goggles feature special vents to eliminate hazardous material exposure.



Thomas No.	Description	Each	Pack
5773C69	Goggles, Chemvent	1	6

**Protective Industrial Products
Bouton® Optical The Scout
Visitor Specs**

- Polycarbonate unilens
- Over-the-glass design fits over all prescription eyewear
- Can also be worn by itself as a regular safety glass
- Molded nose bridge design to fit the vast majority of users
- Indirect vent temples to reduce fogging
- 4 Base curve lens



Thomas No.	Description	Pack	Case
1200W90	The Scout Eyewear, Visitor specs, Clear temple, Clear lens, Anti-scratch	12	144
1200W91	The Scout Eyewear, Visitor specs, Gray temple, Gray lens, Anti-scratch	12	144
1200W92	The Scout Eyewear, Visitor specs, Clear temple, Clear lens, Uncoated	12	144

Thomas No.	Description	Each	Carton
XC2100-B5	Bouffant Cap, Blue, 21", Double bagged, 100 Each/Bag, 5 Bags/Case	100	500
XC2100-W1	Bouffant Cap, Blue, 21", Double bagged, 100 Each/Bag, 5 Bags/Case	100	500



New Lab Start-Up Checklist

CHEMICALS/REAGENTS:

- Acetone
- Acetonitrile
- Detergent
- Ethyl Acetate
- Hexane
- Media
- Methanol
- Nitric Acid
- Reagents
- Salts
- Silica Gel
- Sodium Chloride
- Solvents
- Standards
- Water

CHROMATOGRAPHY:

- Flash Chromatography Media
- Syringes
- Vials

EQUIPMENT:

- Autoclaves
- Baths, Water
- Centrifuges
- Cryogenic Freezing
- Dispensers
- Freeze Dry Systems
- Homogenizers
- Hot Plates
- Incubators
- Ovens
 - Forced Air
 - General Purpose
 - Vacuum
- Refrigerators/Freezers
- Rotary Evaporators
- Shakers
 - Benchtop
 - Clamps
 - Incubating

Equipment con't.

- Stirrers
- Thermal Cycler
- Ultrasonic Cleaners
- Vacuum Pumps
- Vortexers/Mixers
- Water Purification Systems

FURNITURE:

- Cabinets
- Carts
- Chairs/stools
- Countertops
- Drying Racks
- Faucets
- Fixtures
- Fume Hoods
- Glassware Washers
- Shelving
- Sinks
- Tables, Workstations

INSTRUMENTATION:

- Balances
- Barometers
- Conductivity
- Data Loggers
- Hydrometers
- Microplate Readers
- Microscopes
- Refractometers
- Spectrophotometer
- Timers
- Titration

LIFE SCIENCE:

- Cell Culture Supplies
- Microbiology
- Molecular Biology
- PCR
- Protein Purification

SAFETY:

- Apparel
- Chemical Storage
- Controlled Environment
- Ear Protection
- Emergency Response
- Eye Protection
- Eye Wash Kits
- Face and Head Protection
- First Aid
- Hand Hygiene
- Respirators
- Safety Identification

SUPPLIES:

- Aluminum Foil
- Apparel
 - Aprons
 - Caps
 - Coveralls
 - Cuff Tape
 - Flocks
 - Gowns
 - Lab Coats
 - Hoods & Face Covers
 - Masks, Surgical
 - Sleeves and Oversleeves
 - Scrubs
 - Shoe and Boot Covers
 - Smocks
- Autoclave Tape
- Bags
 - Autoclave
 - Biohazard
 - Resealable Bags
- Bench Protectors
- Bottles
- Bunsen Burners
- Burets
- Centrifuge Tubes

Supplies con't.

- Clamps
- Clean Room Supplies
- Cleaners/Disinfectants
- Crucibles
- Face Masks
- Film
- Filtration
- Flasks
- Funnels
- Glassware
- Gloves
- Gas Regulators
- Hygiene
- Labeling Tape & Systems
- Liquid Nitrogen Dewars
- Microslides
- Parafilm
- Petri Dishes
- Pipets
- Pipettors
- Plasticware
- Plates
- Storage Boxes
- Thermometers
- Timers
- Tubes
- Vials
- Wash Bottles
- Wipes



Elkay Plastics

Child Resistant Cannabis Pouch

Each pouch includes a tamper-evident tear notch for use with heat sealing and a reclosable zipper closure. The bags are made of food-safe plastics, so are also well suited for the safe storage and transport of medicinal or recreational regulated food products (edibles).

- Perfect size for pre-rolls, E-Cigarettes, Vape Pens & cartridges 4.8 mil., multilayer, high-barrier film
- Black matte finish
- Opening instructions printed on pouch
- Custom options available (8 colors, low MOQ)

Thomas No.	Description	Case
21A00P852	5.75 x 2.88", 4.8 mil. Pre-Roll Bag Black	2000
21A00P853	5.75 x 2.88", 4.8 mil. Pre-Roll White	2000
21A00P854	4 x 5 x 2", 4.8 mil. 1/8 oz. Bag Black	2000
21A00P855	4 x 5 x 2", 4.8 mil. 1/8 oz. Bag White	2000
21A00P856	4 x 6.63 x 2", 4.8 mil. 1/4 oz. Bag Black	2000
21A00P857	4 x 6.63 x 2", 4.8 mil. 1/4 oz. Bag White	2000
21A00P858	5 x 8.13 x 3", 4.8 mil. 1/2 oz. Bag Black	1000
21A00P859	5 x 8.13 x 3", 4.8 mil. 1/2 oz. Bag White	1000
21A00P860	5.9 x 9 x 3.5", 4.8 mil. 1 oz. Bag Black	1000
21A00P861	5.9 x 9 x 3.5", 4.8 mil. 1 oz. Bag White	1000
21A00P862	9 x 5.9 x 3.5", 4.8 mil. 1 oz. Bag Black	1000
21A00P863	9 x 5.9 x 3.5", 4.8 mil. 1 oz. Bag White	1000
21A00P864	12.2 x 9 x 4", 4.8 mil. Large Exit Bag Black	500
21A00P865	12.2 x 9 x 4", 4.8 mil. Large Exit Bag White	500



| Packaging

- Vials
- Child Resistant Bags
- Smell Proof Packaging
- Edible Packaging
- Jars



sales@ats-scientific.com
1-800-661-6700